

GORIŠKA BRDA

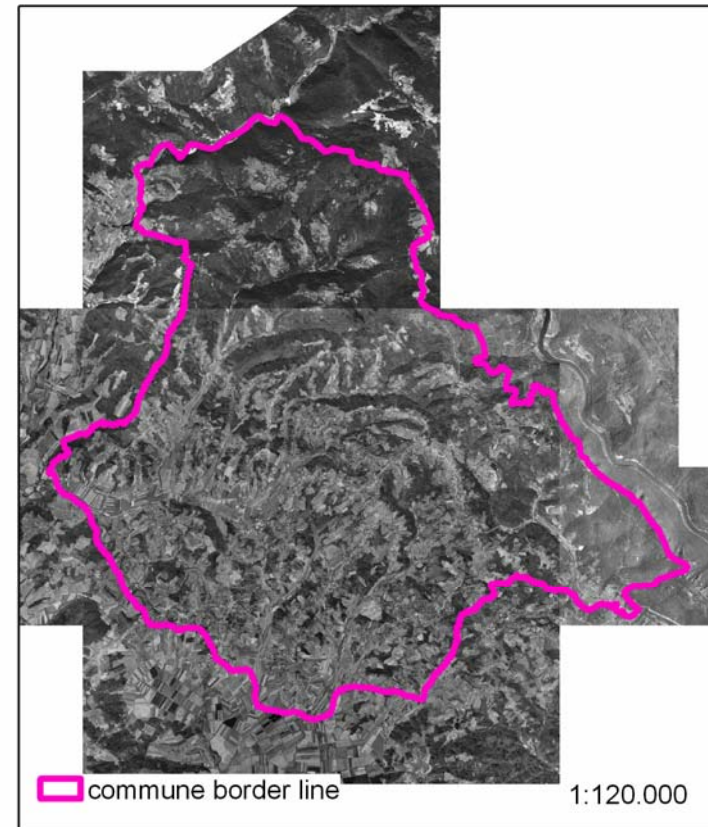
LAND USE/COVER CHANGES

1819 – 2006

GORIŠKA BRDA

Geographical Facts and Division

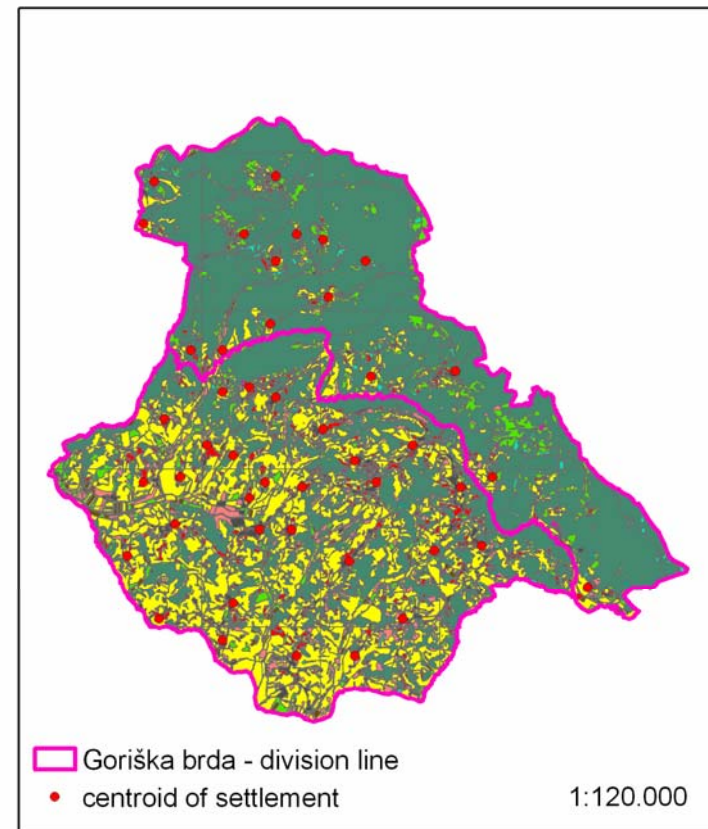
- Naturalgeographic and historical region of Goriška brda (Collio) is associated in administrative border of Brda commune



GORIŠKA BRDA

Geographical Facts and Division

- Goriška brda are heterogeneous region – divided to Northern (Upper) Brda and Southern (Lower) Brda
- Discintions in litostratigraphy, relief, precipitation, density of settlements and population, economic structure of region, land use

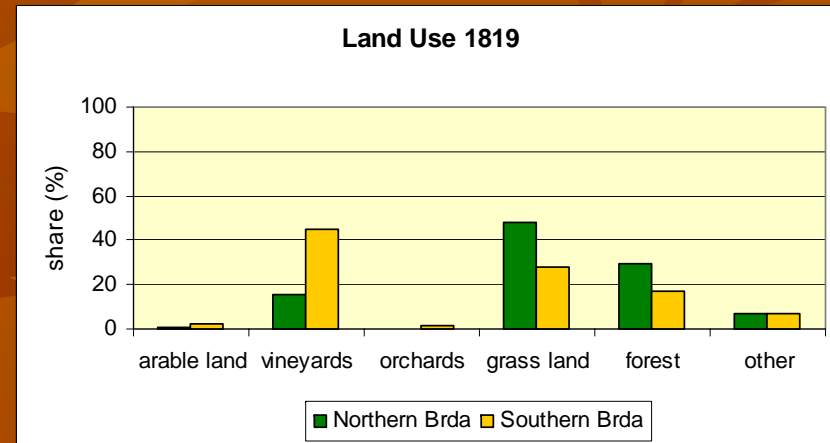


Notthern vs Southern GORIŠKA BRDA

Diferences in Land Use

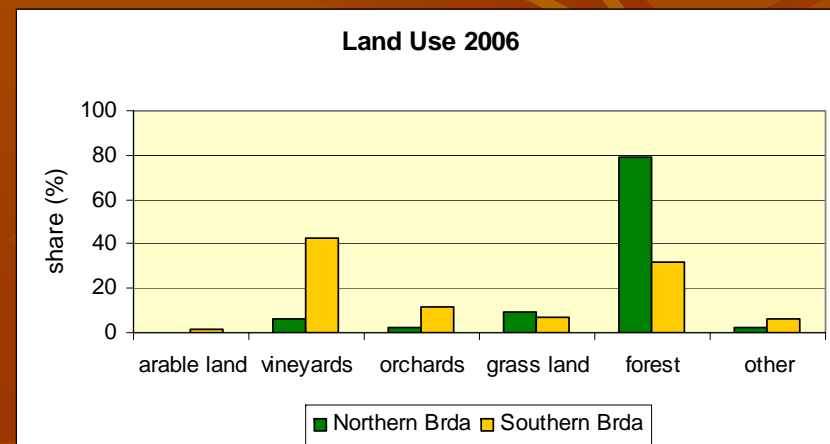
Southern Brda:

- prevailing of vineyards in last 200 years with more than 40 % of area
- till 2006 forest slightly increased from 17 % to 30 %, grass land decreased from 28 % to 7 %.

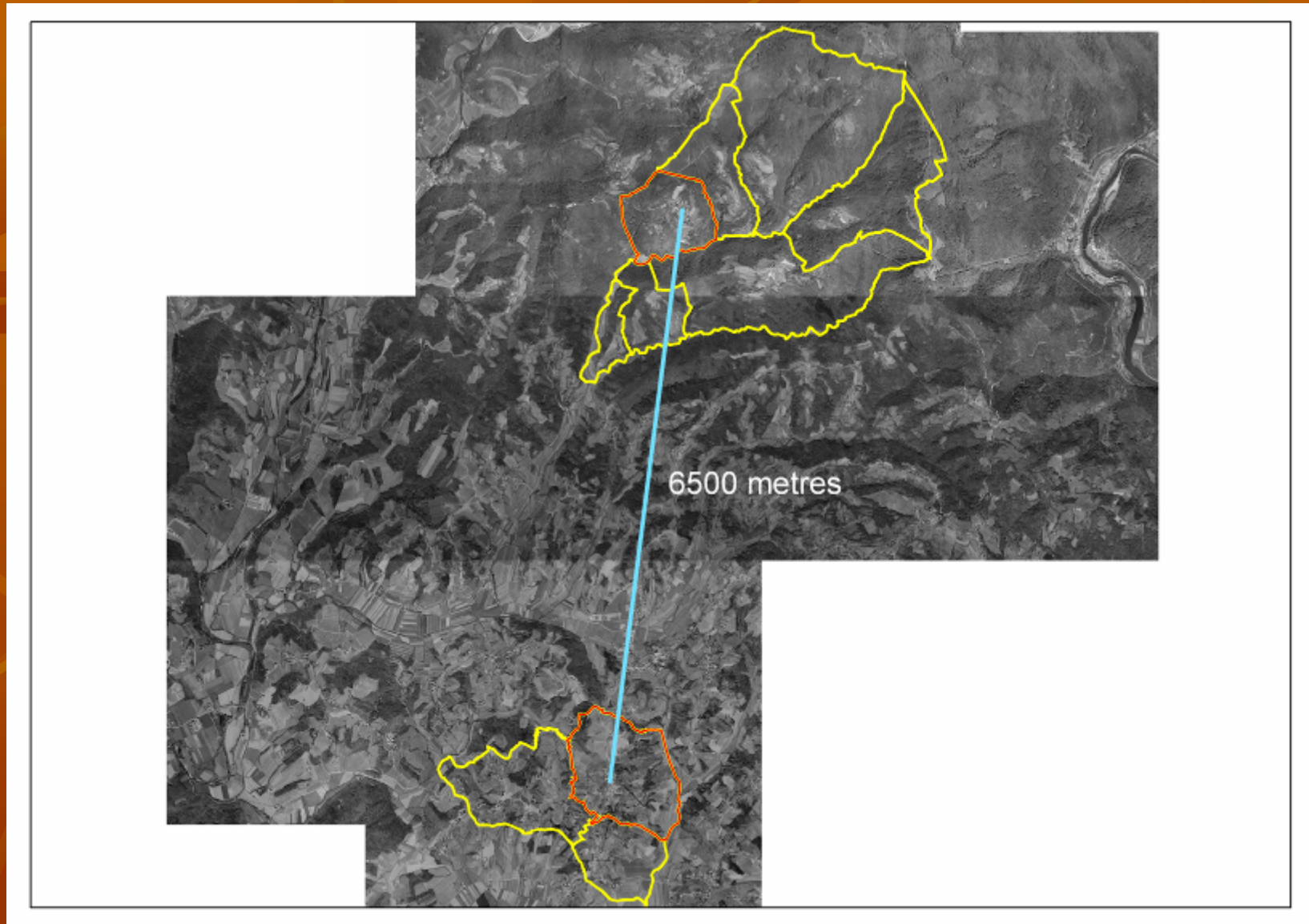


Northern Brda:

- in year 1819 prevailing of grass land with 48 %, share of vineyard was 15 %;
- in year 2006 forest prevailing with 80%, grass land and vinyads less than 10 %.



Position of settlements on orthophoto



Adjustment of land use categories

BASIC CATEGORIES 1819	ADJUSTED CATEGORIES	BASIC CATEGORIES 2002
Garden	Arable land / field	Arable land / field
Arable land / field		
Field with vine	Vineyard	Vineyard
Vineyard		
Vneyard with olive trees		
Meadow with fruit trees	Orchard	Extensive orchard
		Intensive orchard
Pasture	Grassland	Extensive meadow
Pasture with trees		
Forest	Forest	Abandoned land
		Mixed agricultural-forestry land use
		Forest
Bare land	Other	Build up area
Buiolding		
Yard		
Trail, Road		
Water		
Trimming zone		



Dobrovo 12. 10. 2006

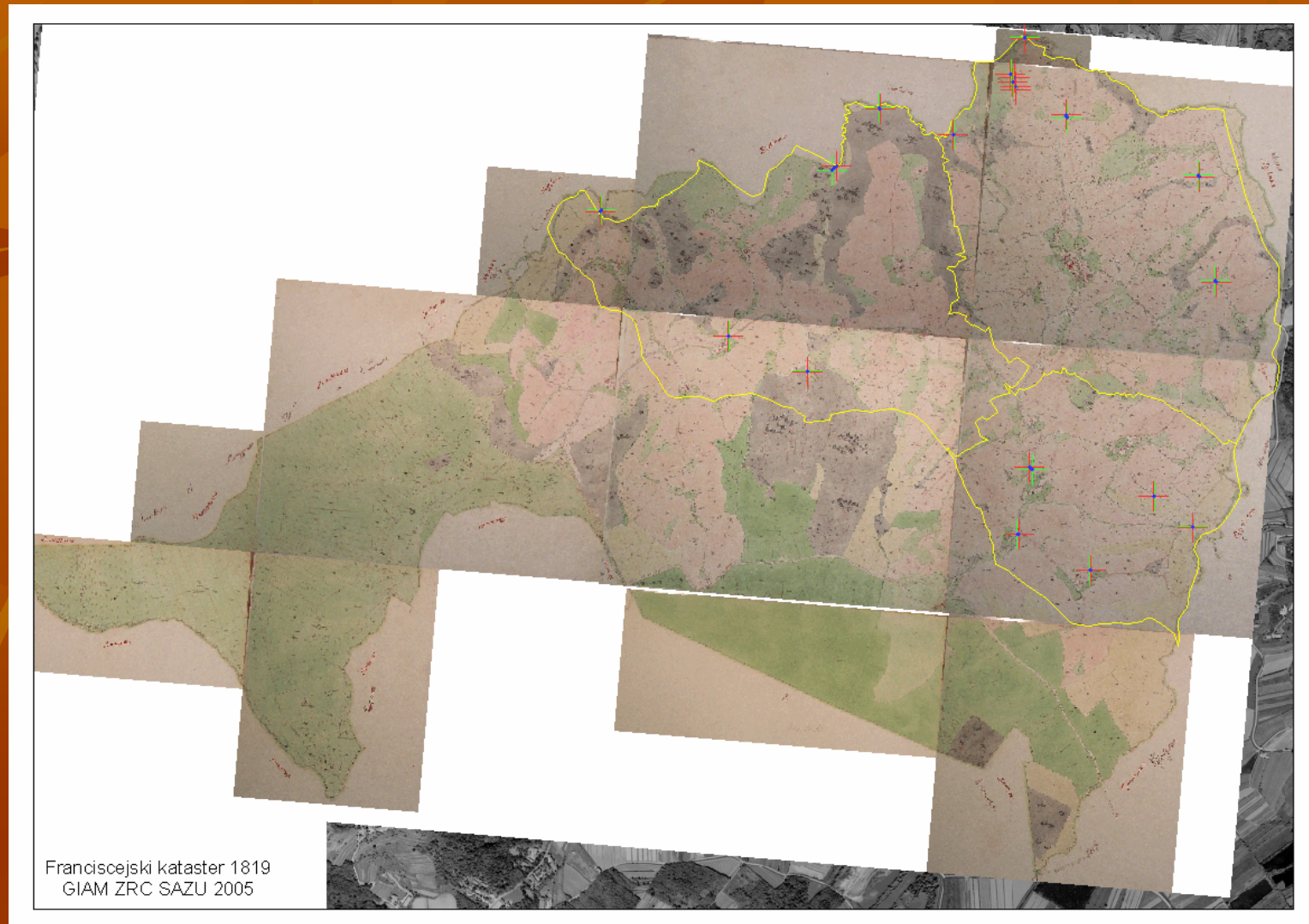
Franci Petek ALPTER Slovenia

MEDANA and KOŽBANA

basic facts

	Medana	Kožbana
Total area	130,5 ha	81 ha
Average altitude	123 m (min 60 m, max 187 m)	275 m (min 145 m, max 411 m)
Average slope	15° (min 0°, max 37,8°)	20° (min 0 °, max 48°)
Source of land use/cover database	<ul style="list-style-type: none">■ Franziscan cadastral map 1819 (Archivio di Stato di Gorizia)■ Agricultural land use map 2002 (Ministry of Agriculture, Forestry and Food of R Slovenia)■ Field mapping 2006	

Basic picture of joint sheets of the Franziscean cadastral map of Medana



Dobrovo 12. 10. 2006

Franci Petek

ALPTER Slovenia

Cutting of Franziscena cadastal map – georeferenced on orthophoto

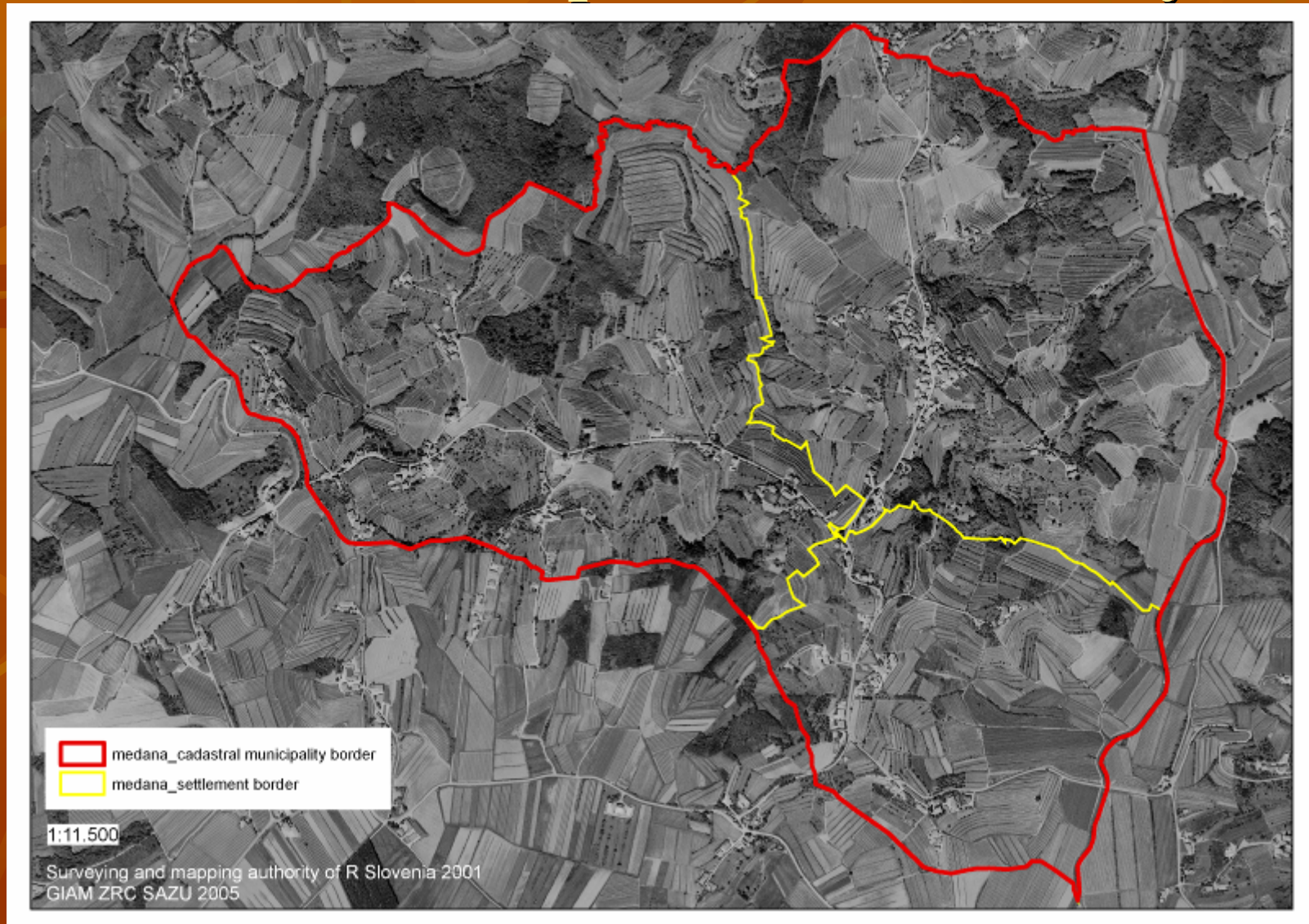


Dobrovo 12. 10. 2006

Franci Petek

ALPTER Slovenia

Medana – ortophoto with boundary



Dobrovo 12. 10. 2006

Franci Petek

ALPTER Slovenia

LAND USE 1819

settlement MEDANA

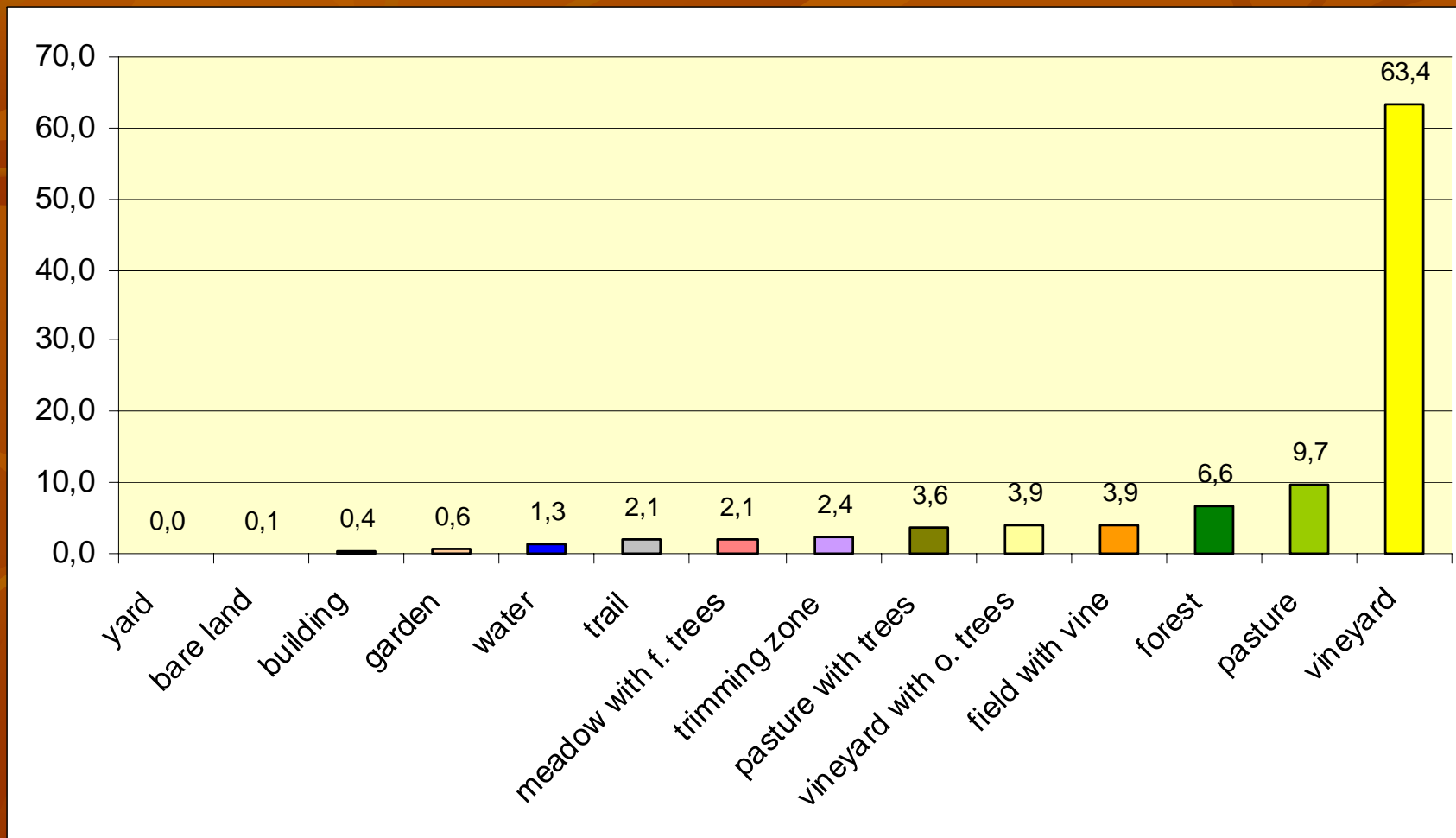


Dobrovo 12. 10. 2006

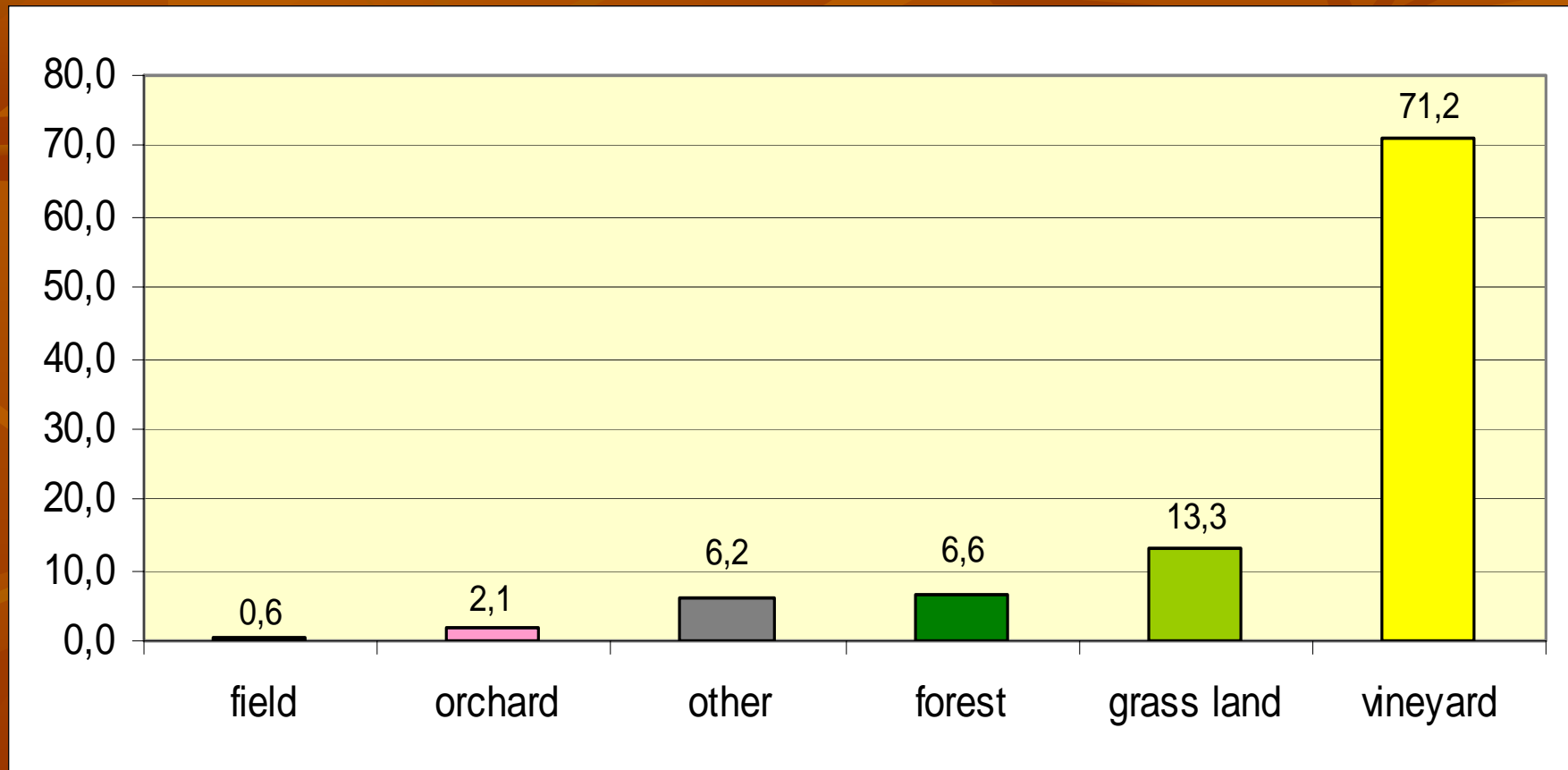
Franci Petek

ALPTER Slovenia

Medana – portion (%) of land use categories 1819

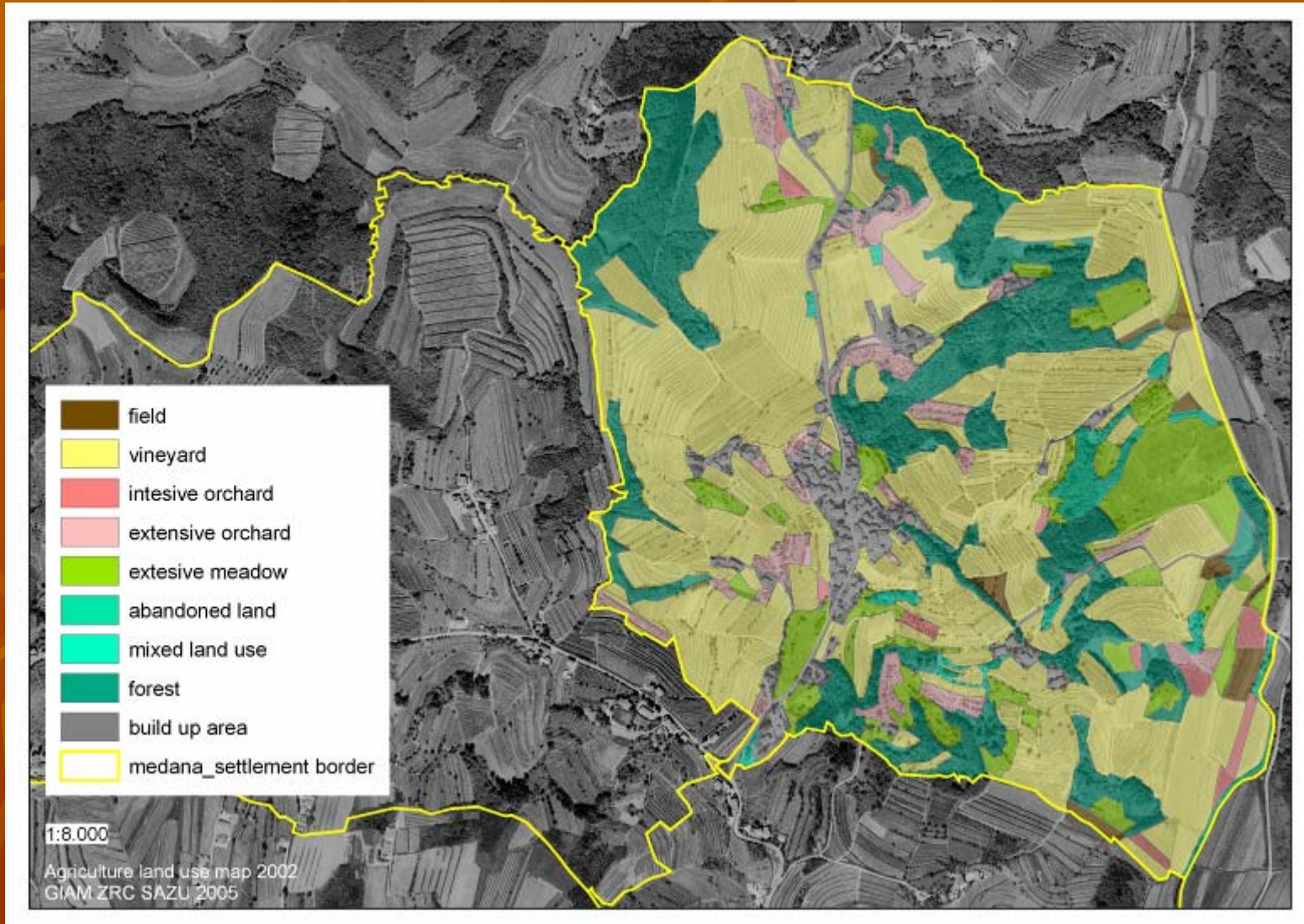


Medana – portion (%) of adjusted land use categories 1819



LAND USE 2002

settlement MEDANA

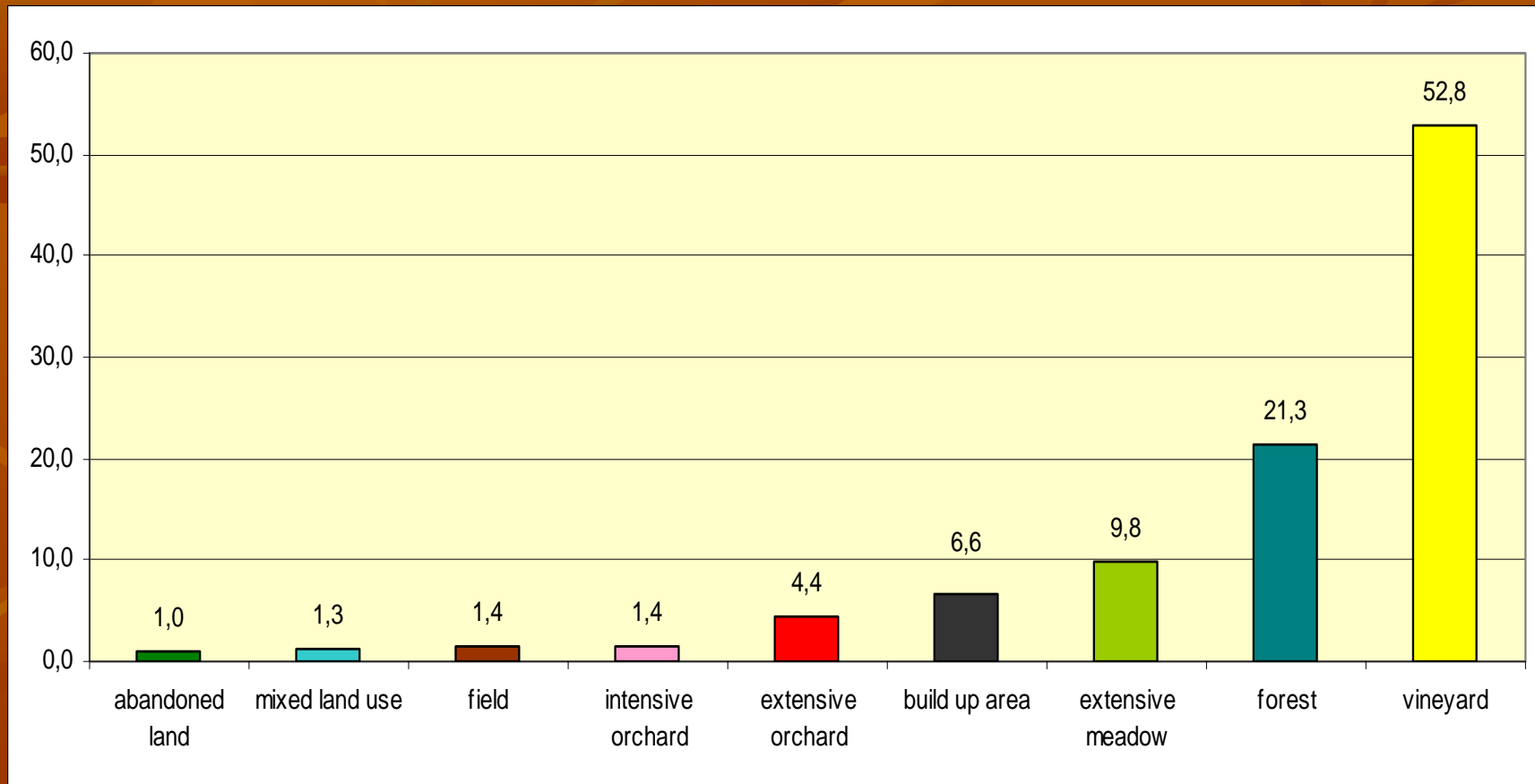


Dobrovo 12. 10. 2006

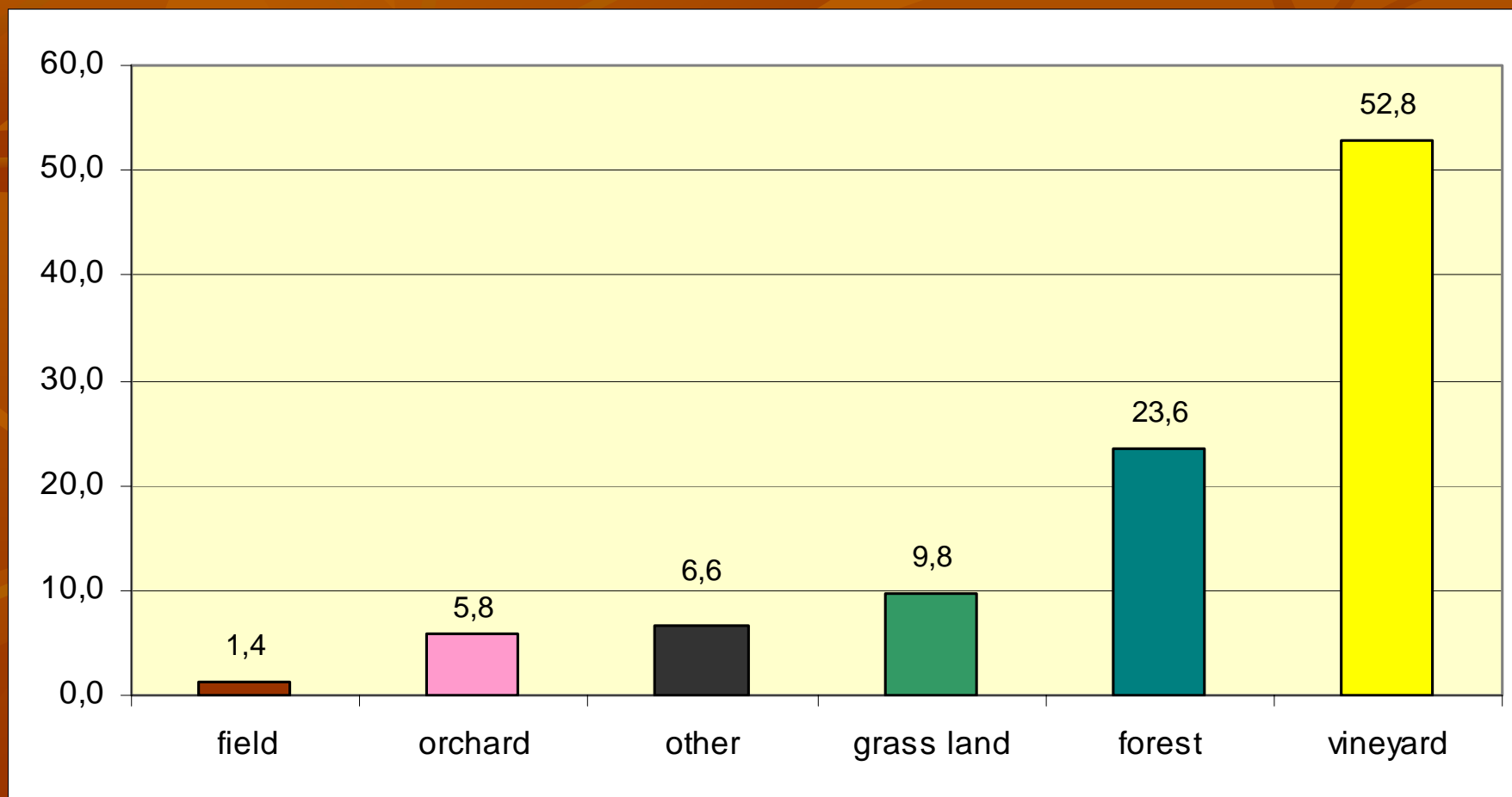
Franci Petek

ALPTER Slovenia

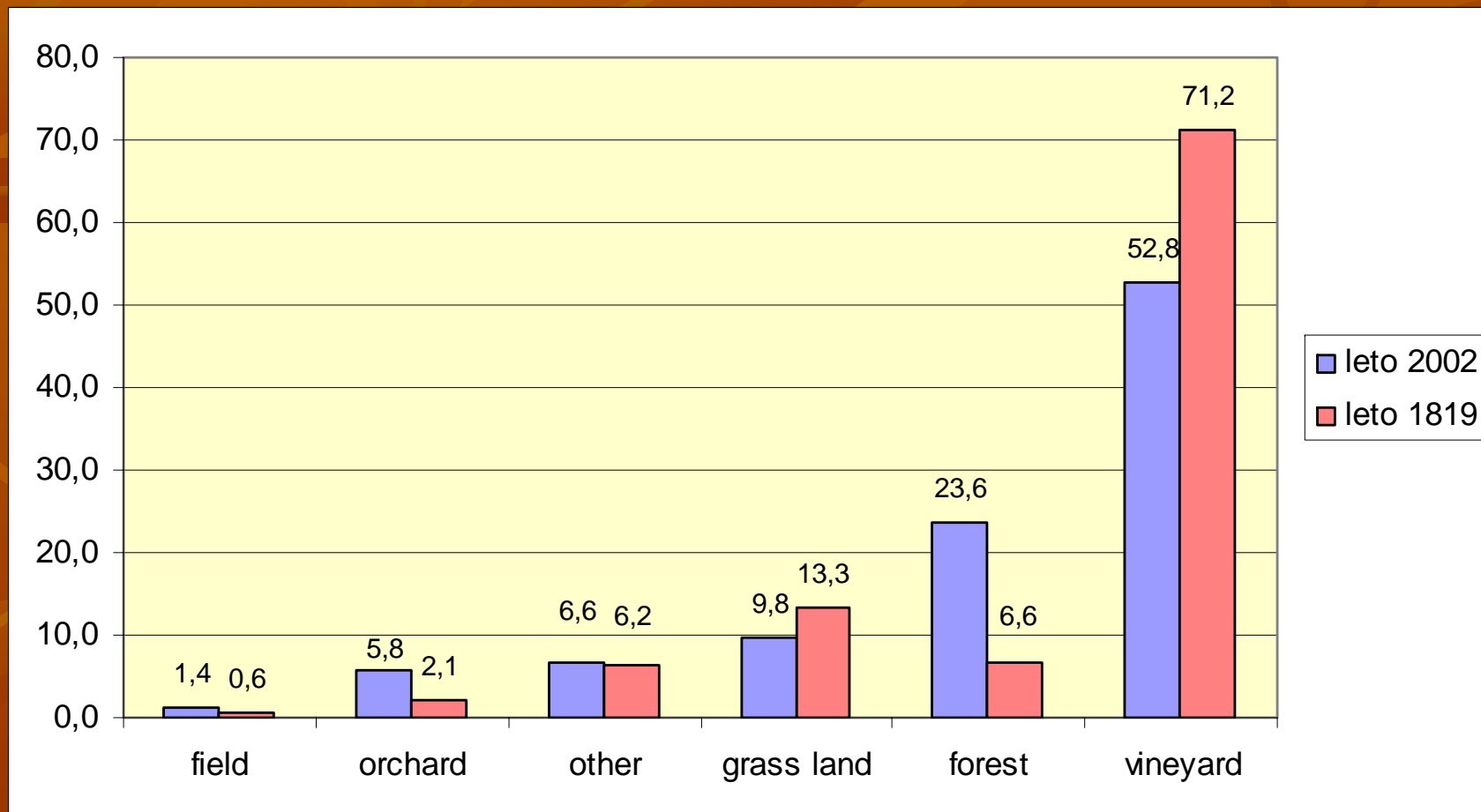
Medana - portion (%) of land use categories 2002



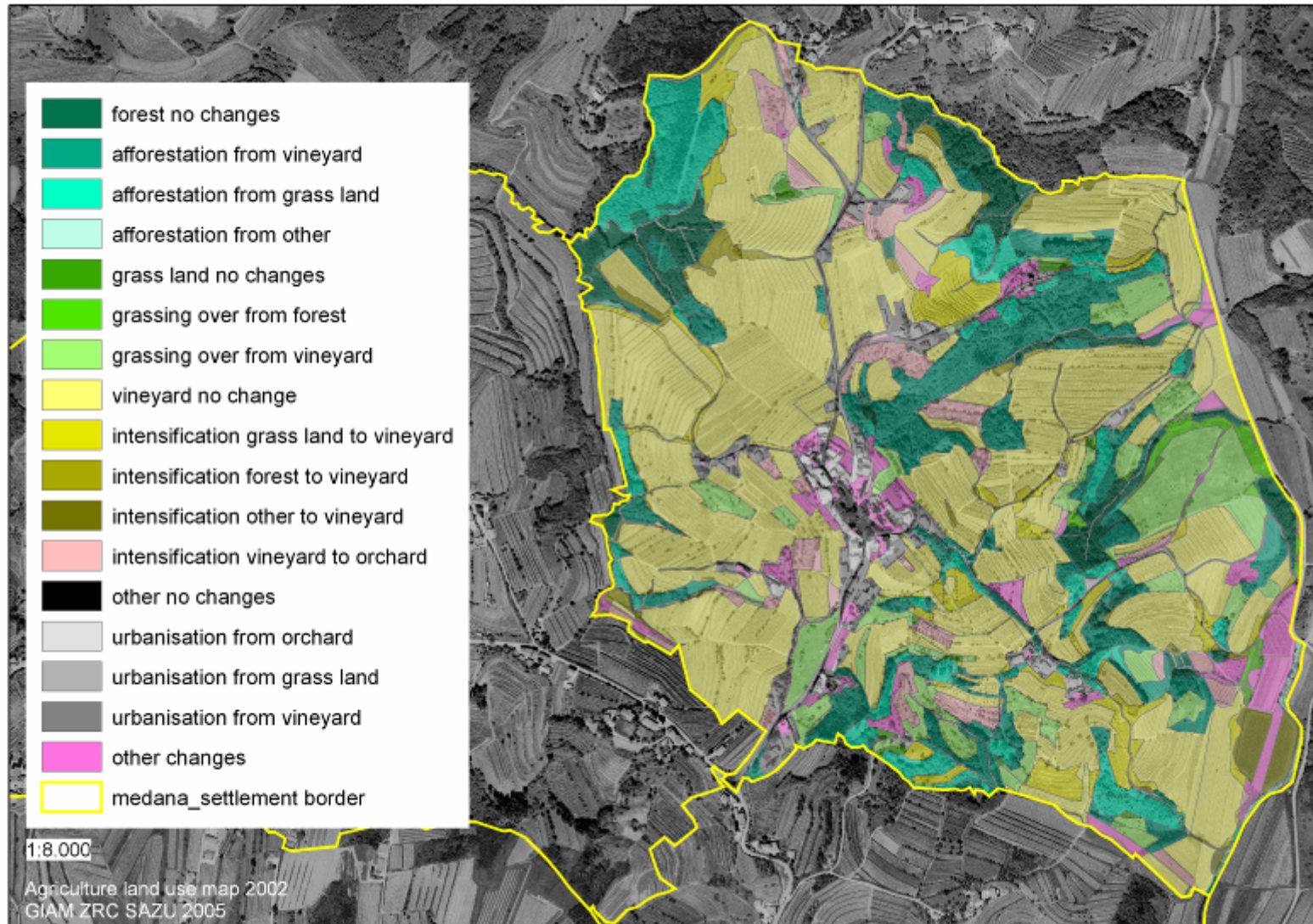
Medana – portion (%) of adjusted land use categories 2002



Comparison of portions of land use categories Medana 1891-2002



Land use changes MEDANA 1819-2002

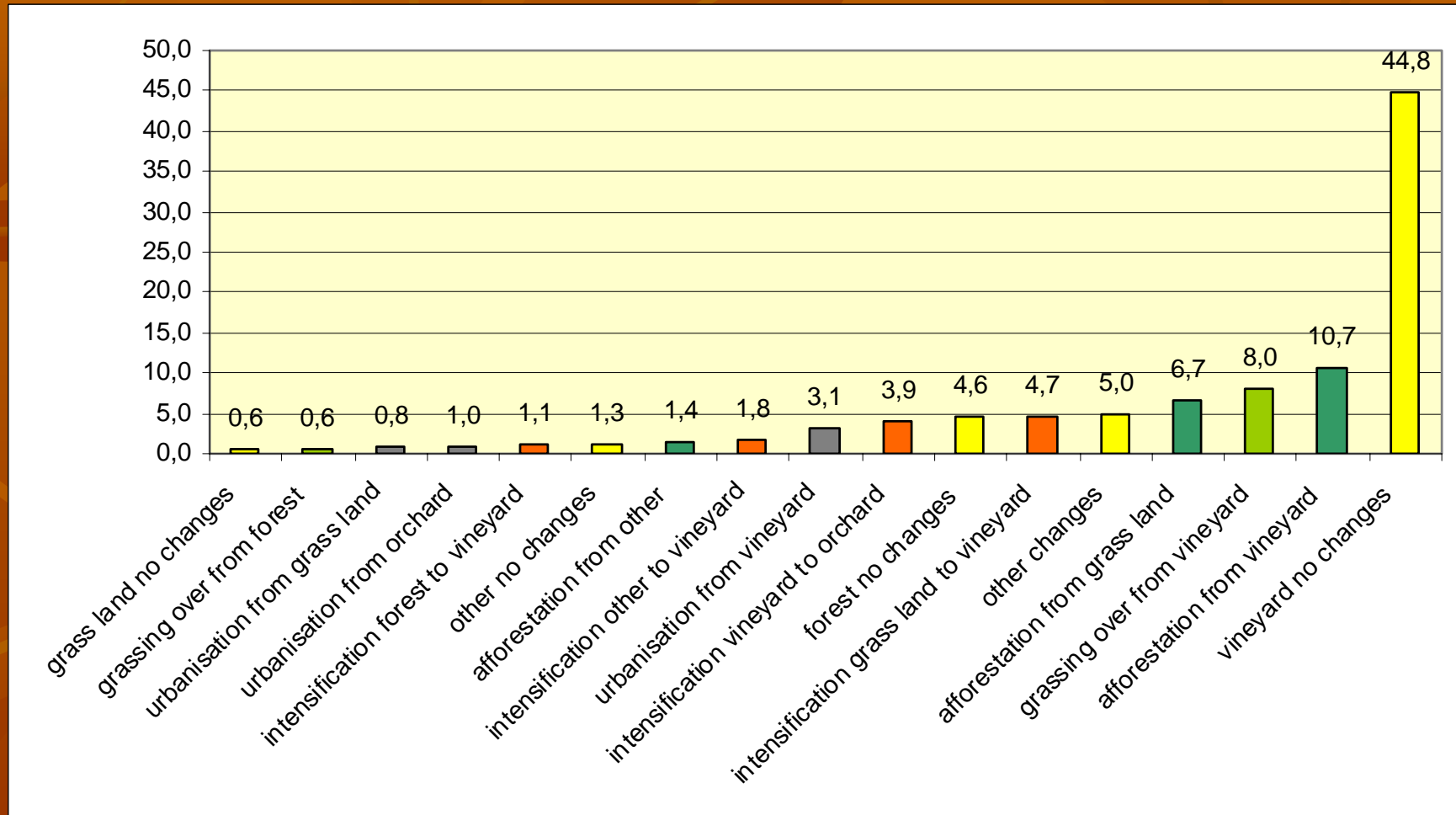


Dobrovo 12. 10. 2006

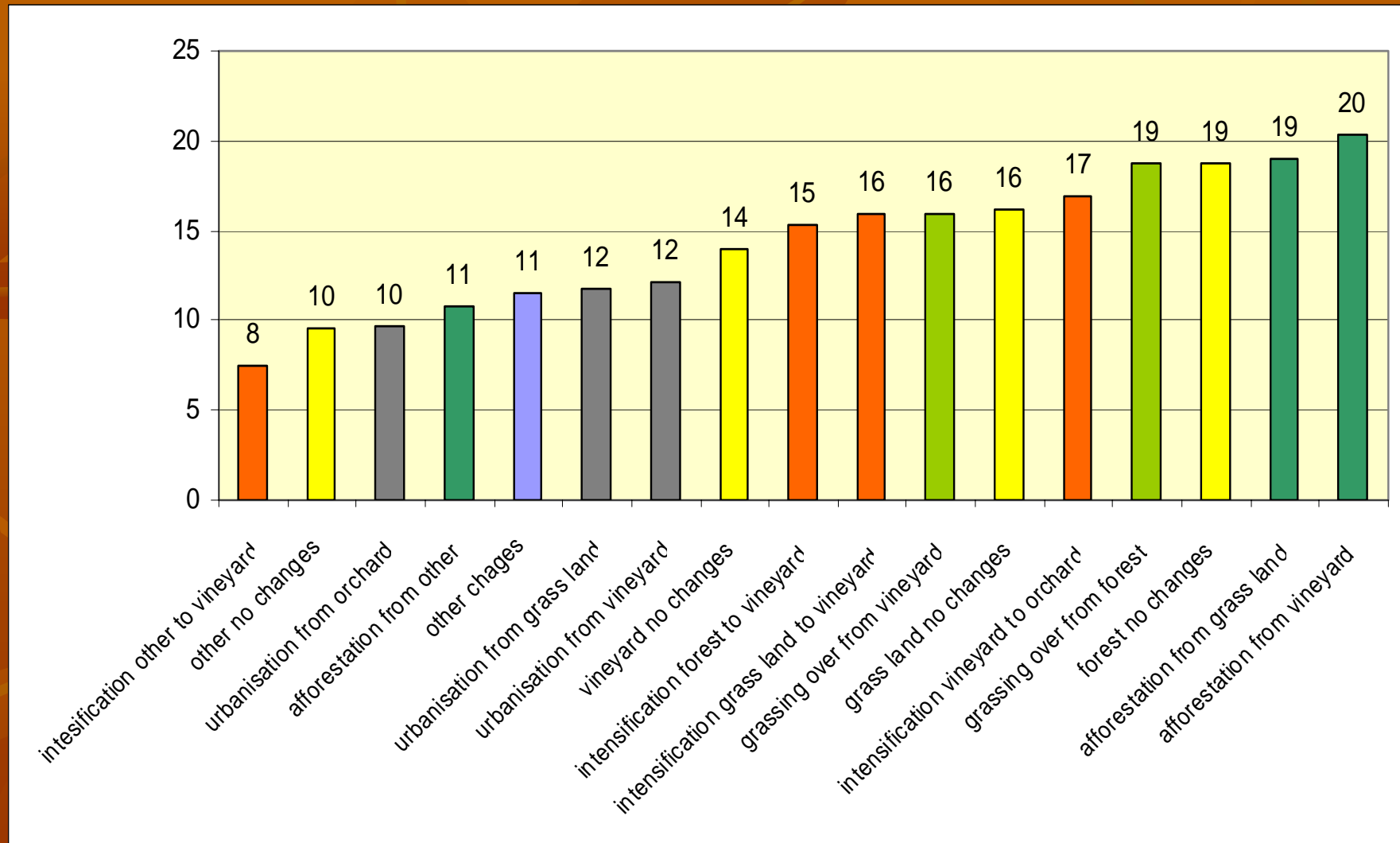
Franci Petek

ALPTER Slovenia

Land use changes – portion (%) of processes MEDANA 1819-2002

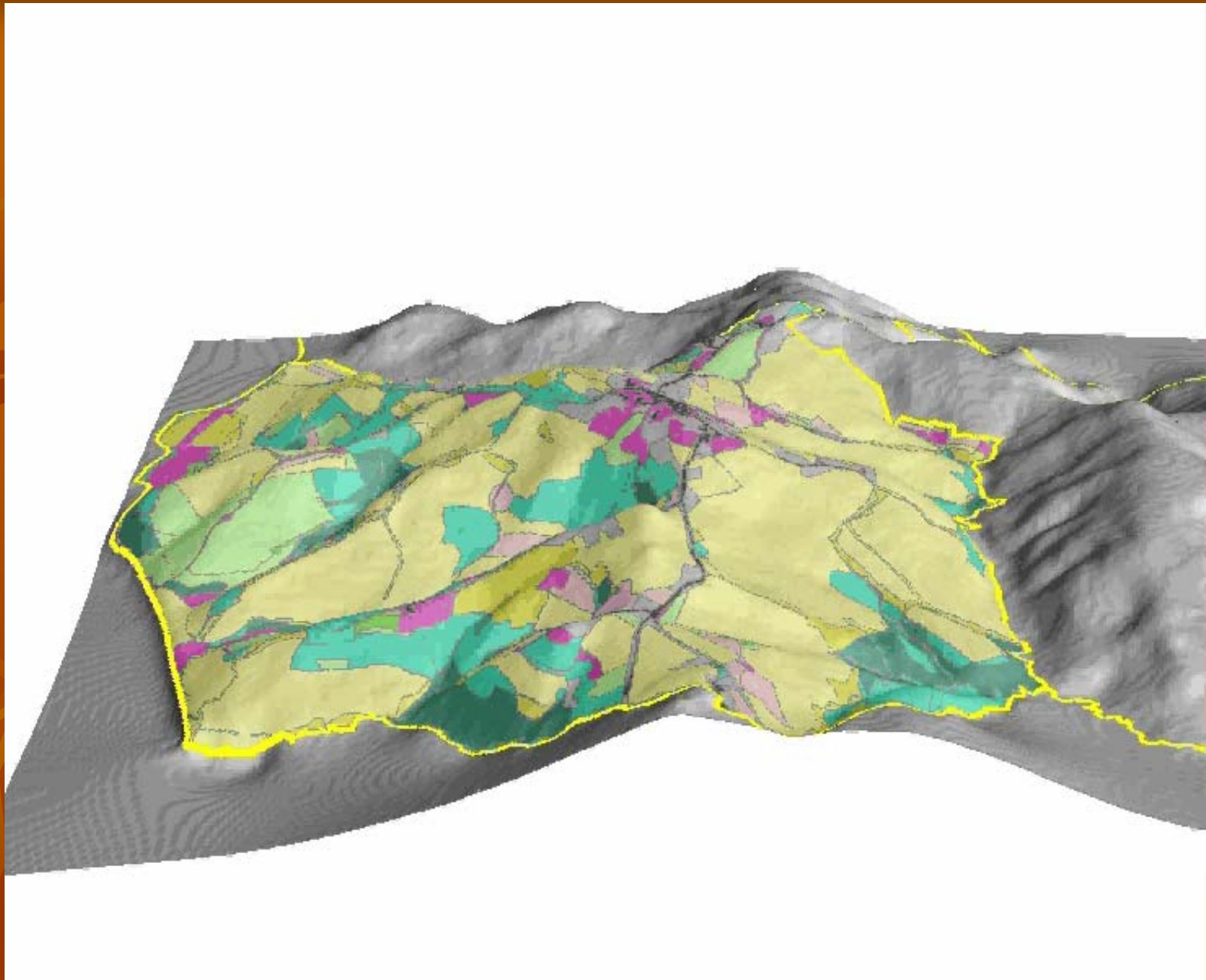


Average slope for every process of land use change Medana 1891-2002



Ratio in north to south expositions processes of land use changes Medana 1819 -2002

grassing over from forest	1 : 0,2
forest no changes	1 : 0,4
intensification forest to vineyard	1 : 0,6
vineyard no changes	1 : 0,8
intensification other to vineyard	1 : 0,9
afforestation from other	1 : 0,9
other changes	1 : 1,0
grassing over from vineyard	1 : 1,0
urbanisation from vineyard	1 : 1,1
afforestation from vineyard	1 : 1,1
urbanisation from orchard	1 : 1,3
intensification grass land to vineyard	1 : 1,4
intensification vineyard to orchard	1 : 1,6
other no changes	1 : 1,6
urbanisation from grass land	1 : 2,0
grass land no change	1 : 2,1
afforestation from grass land	1 : 2,4

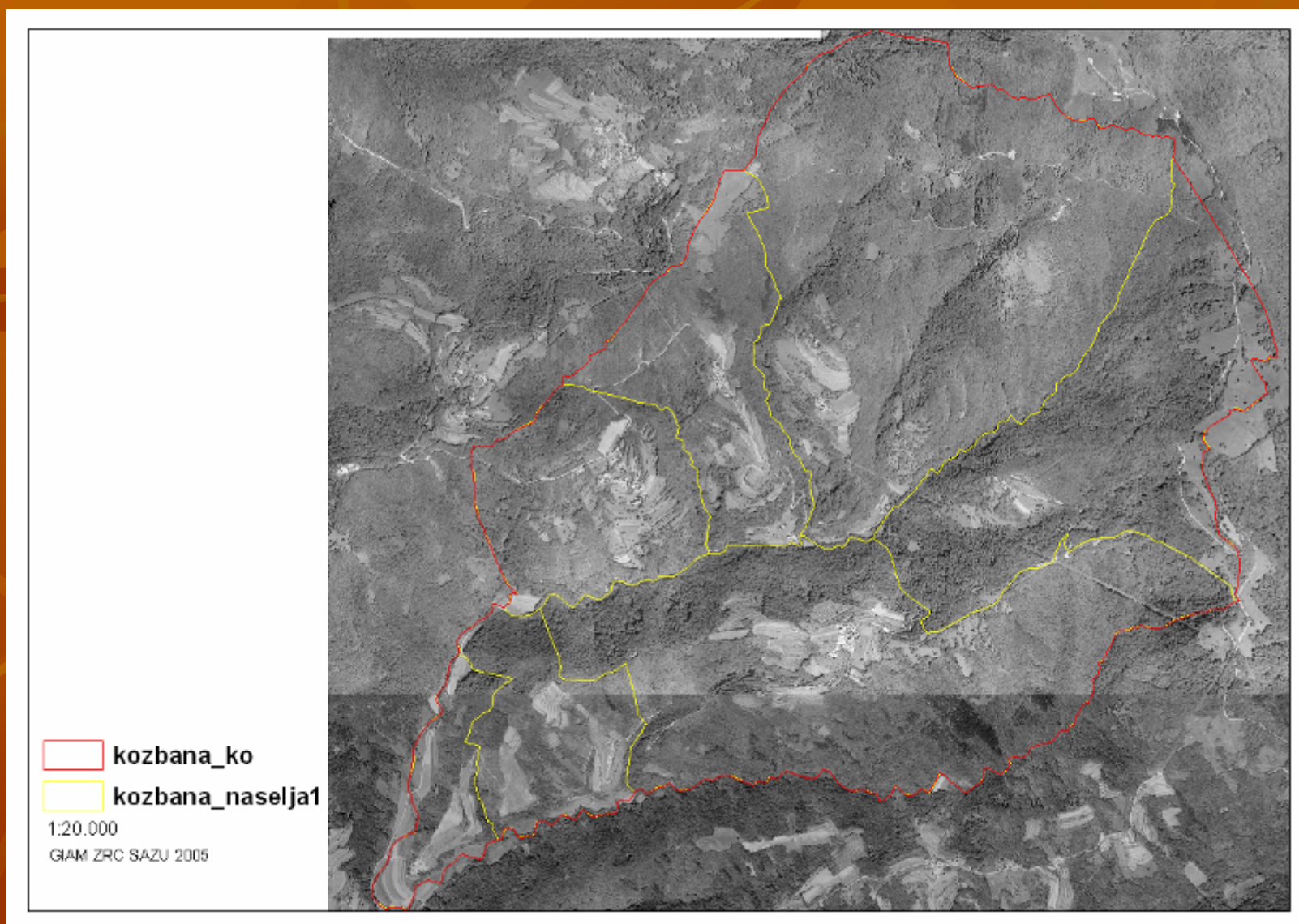


Dobrovo 12. 10. 2006

Franci Petek

ALPTER Slovenia

Kožbana – orthophoto wit boundaries



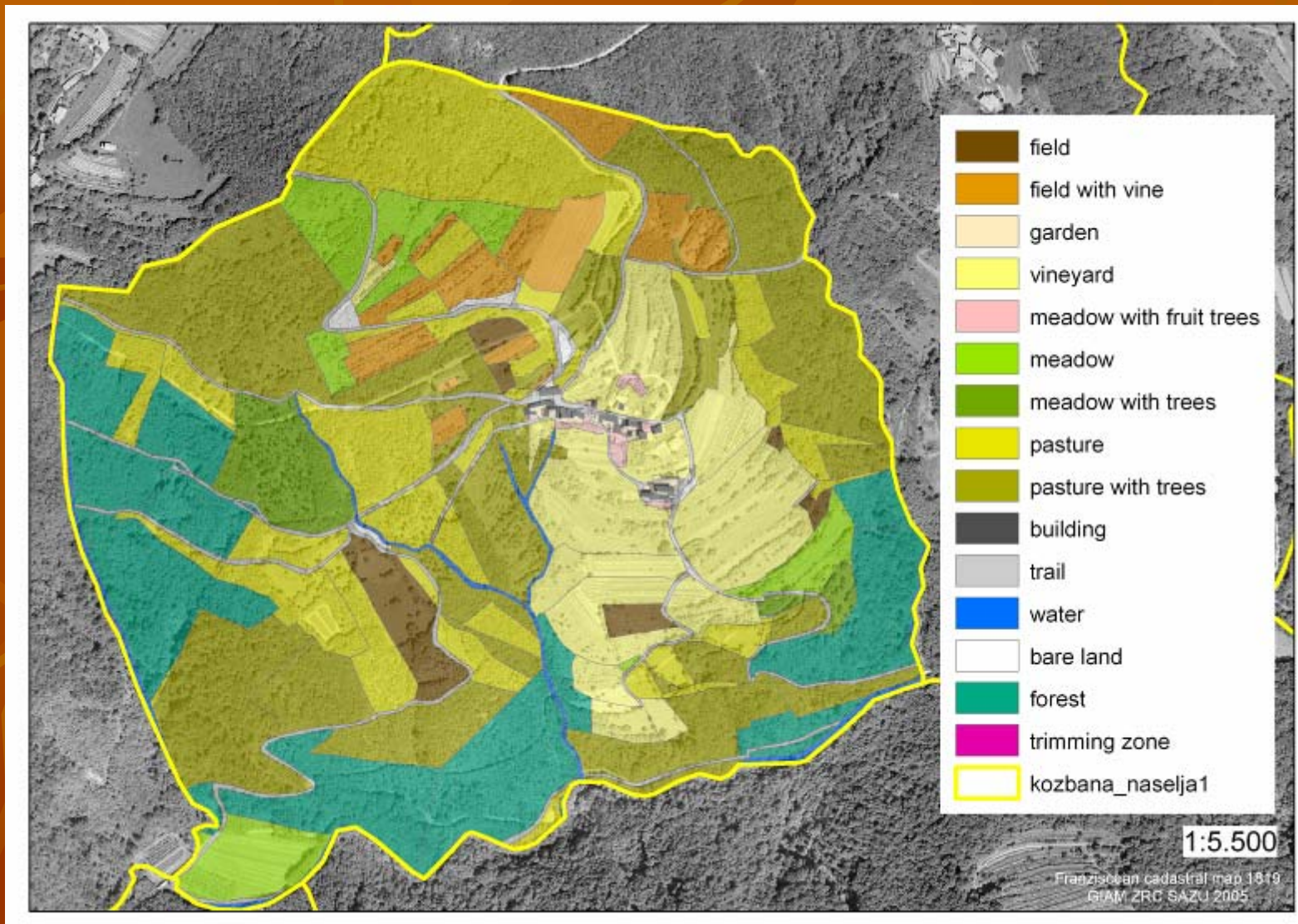
Dobrovo 12. 10. 2006

Franci Petek

ALPTER Slovenia

LAND USE 1819

settlement KOŽBANA

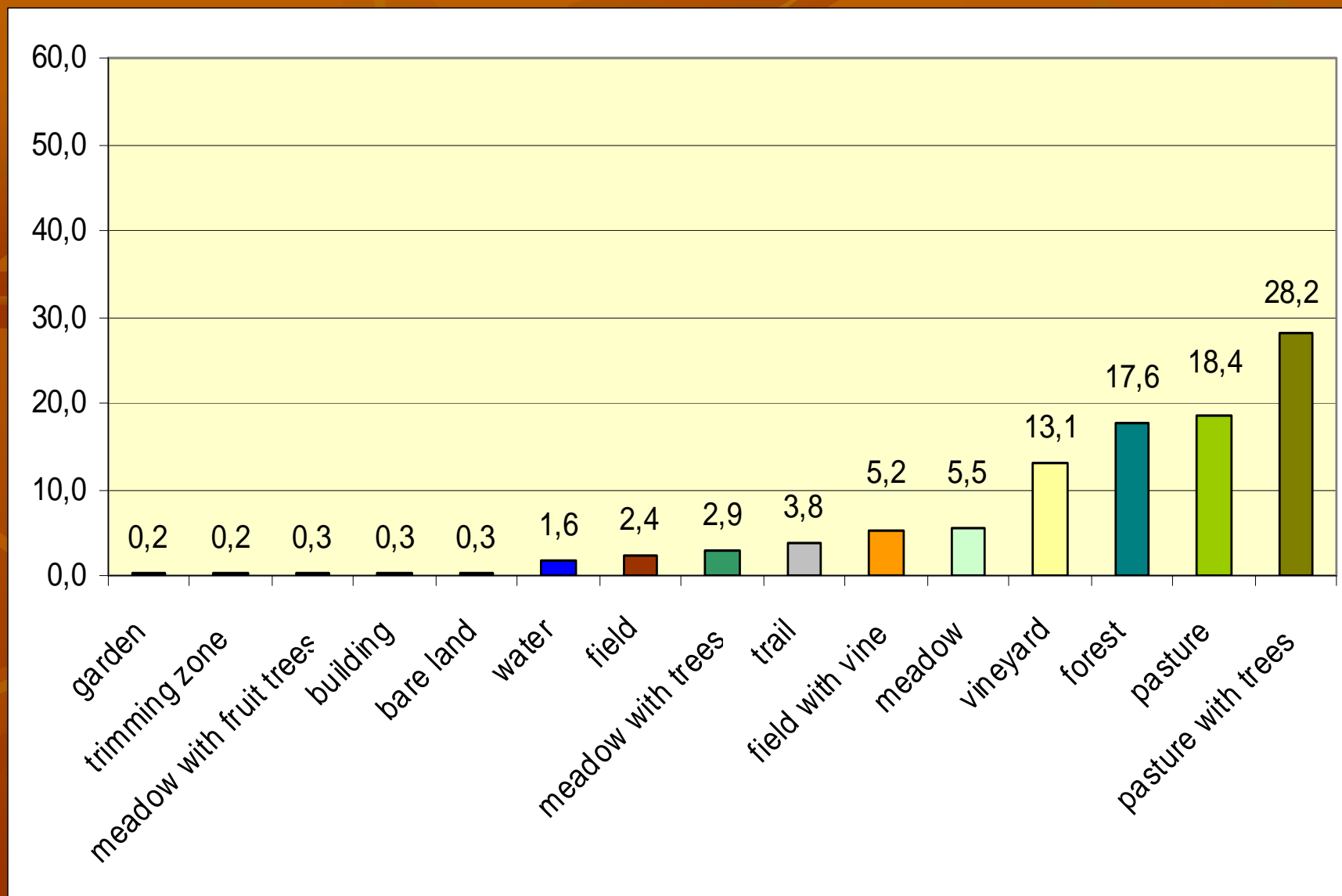


Dobrovo 12. 10. 2006

Franci Petek

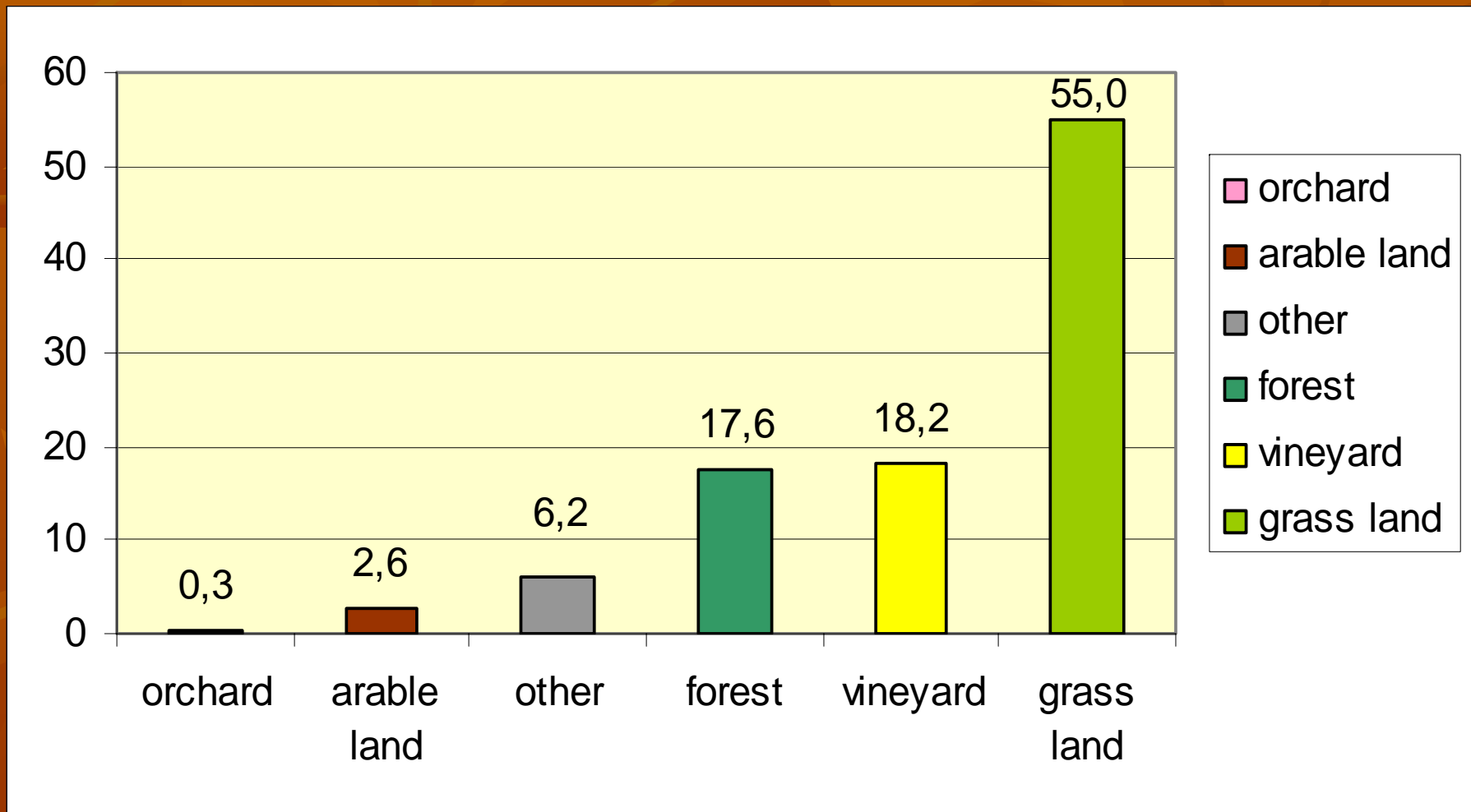
ALPTER Slovenia

Kožbana – land use 1819



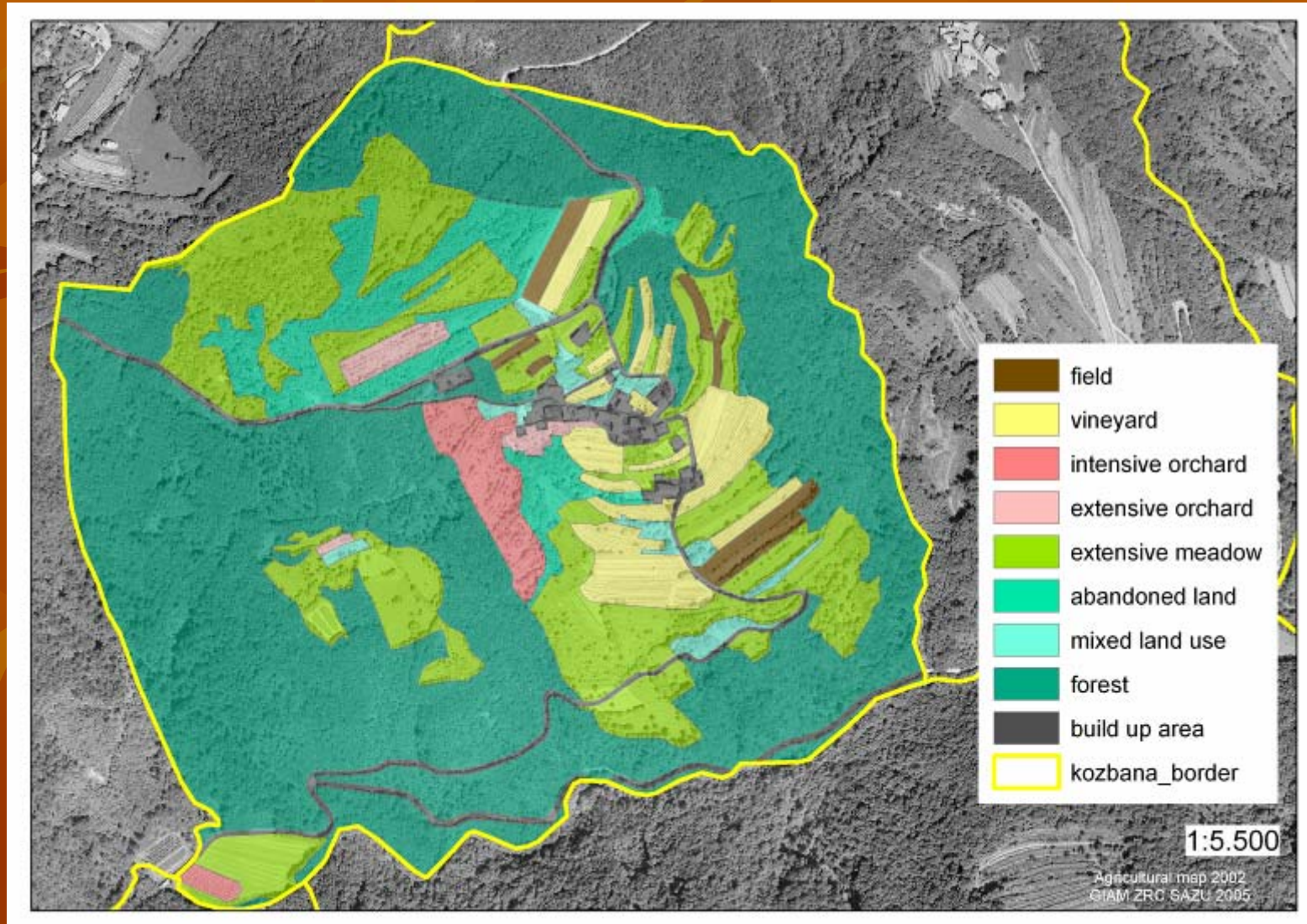
Kožbana – portion (%) of adjusted land use categories

1819



LAND USE 2002

settlement KOŽBANA

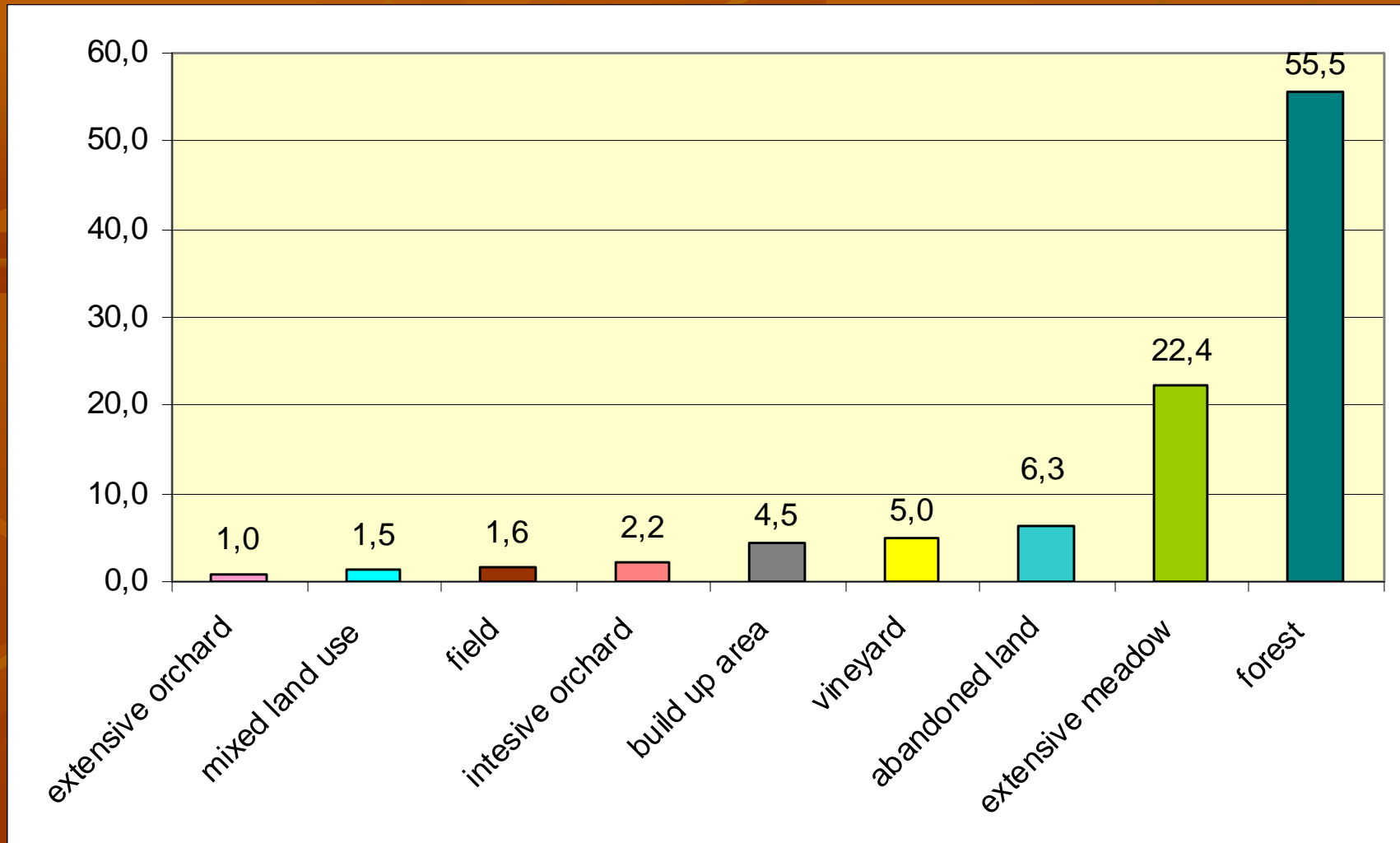


Dobrovo 12. 10. 2006

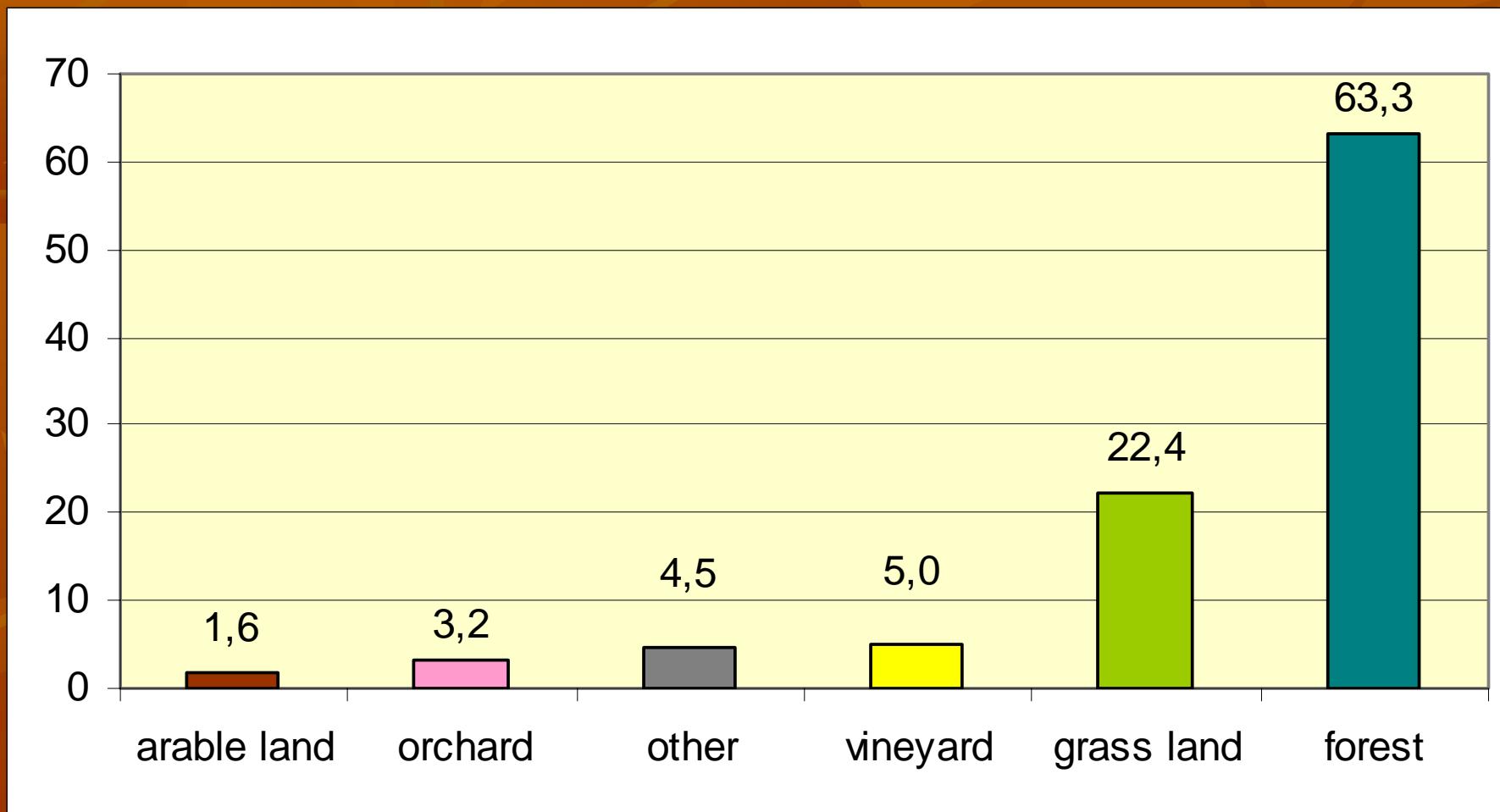
Franci Petek

ALPTER Slovenia

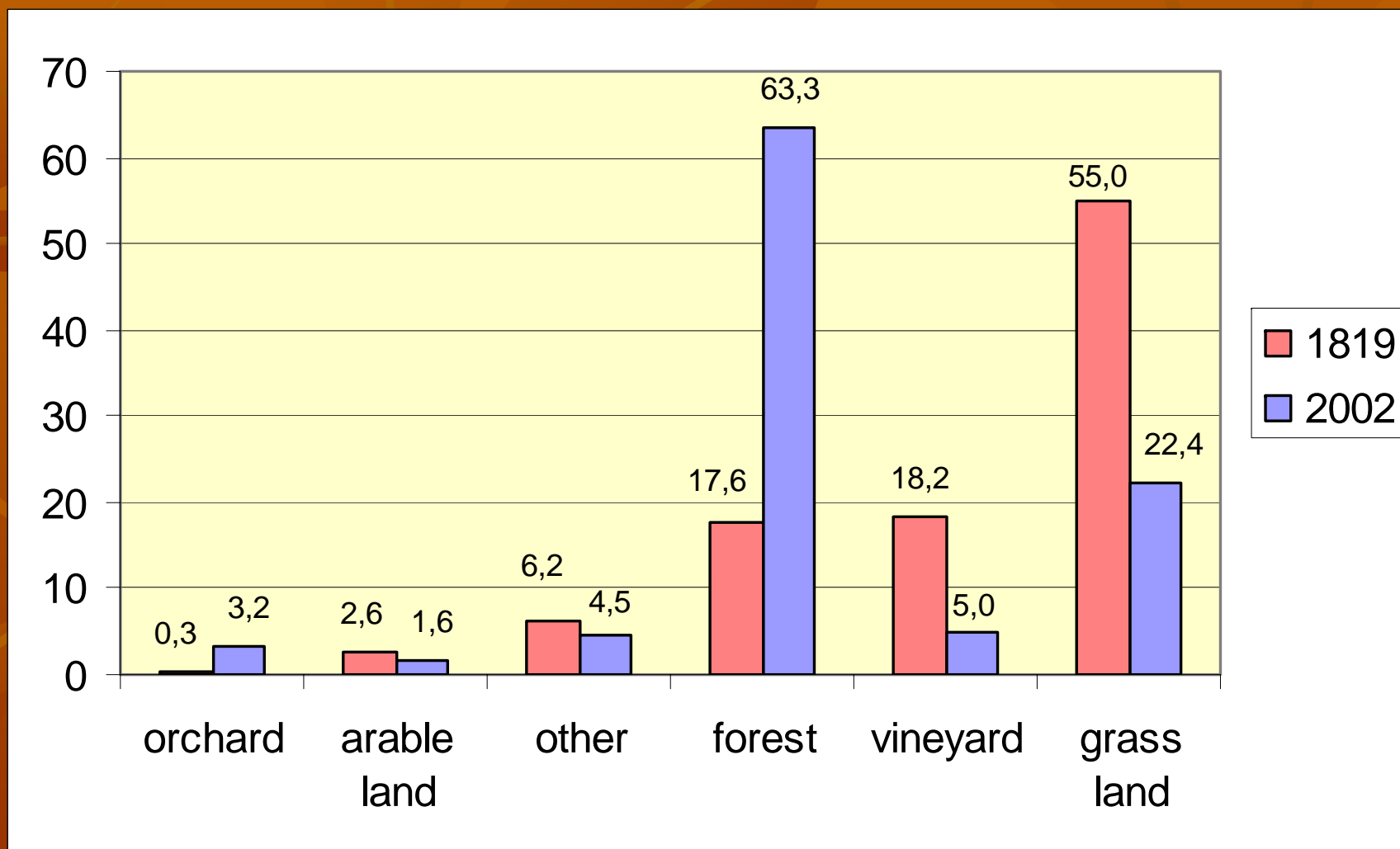
Kožbana – land use 2002



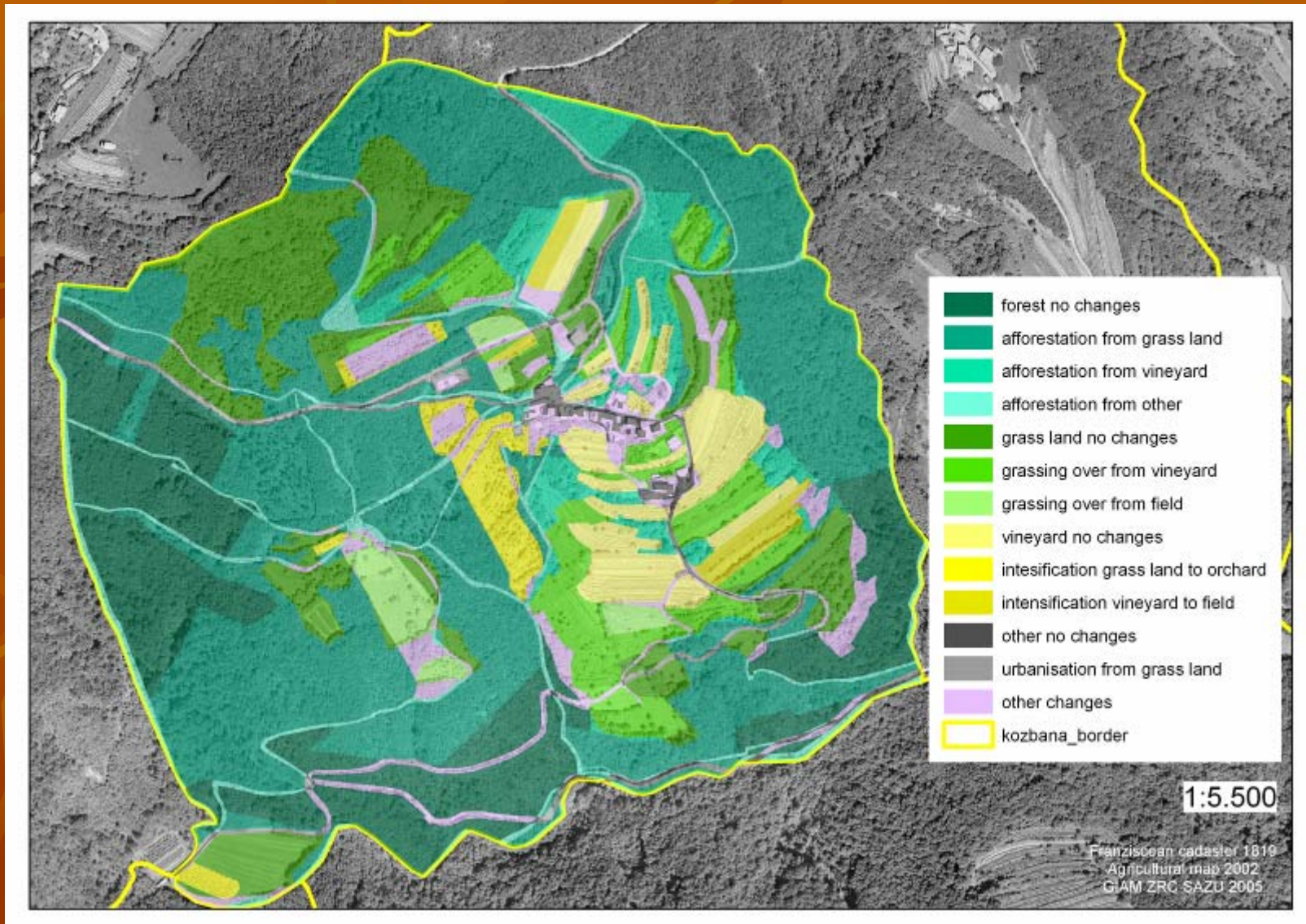
Kožbana — portion (%) of adjusted land use categories 2002



Comparison of portions (%) of land use categories Kožbana 1891-2002



Land use changes KOŽBANA 1819-2002

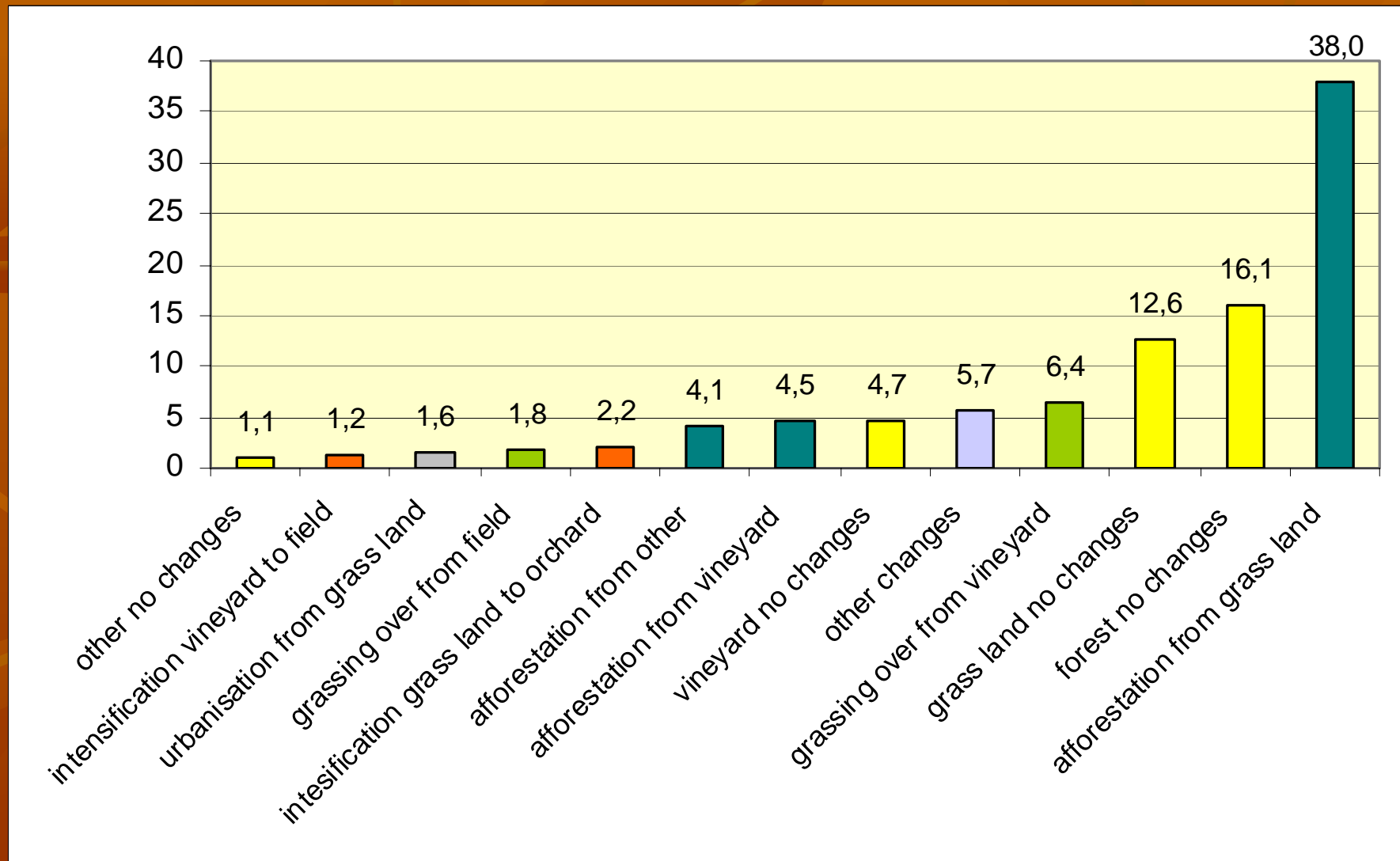


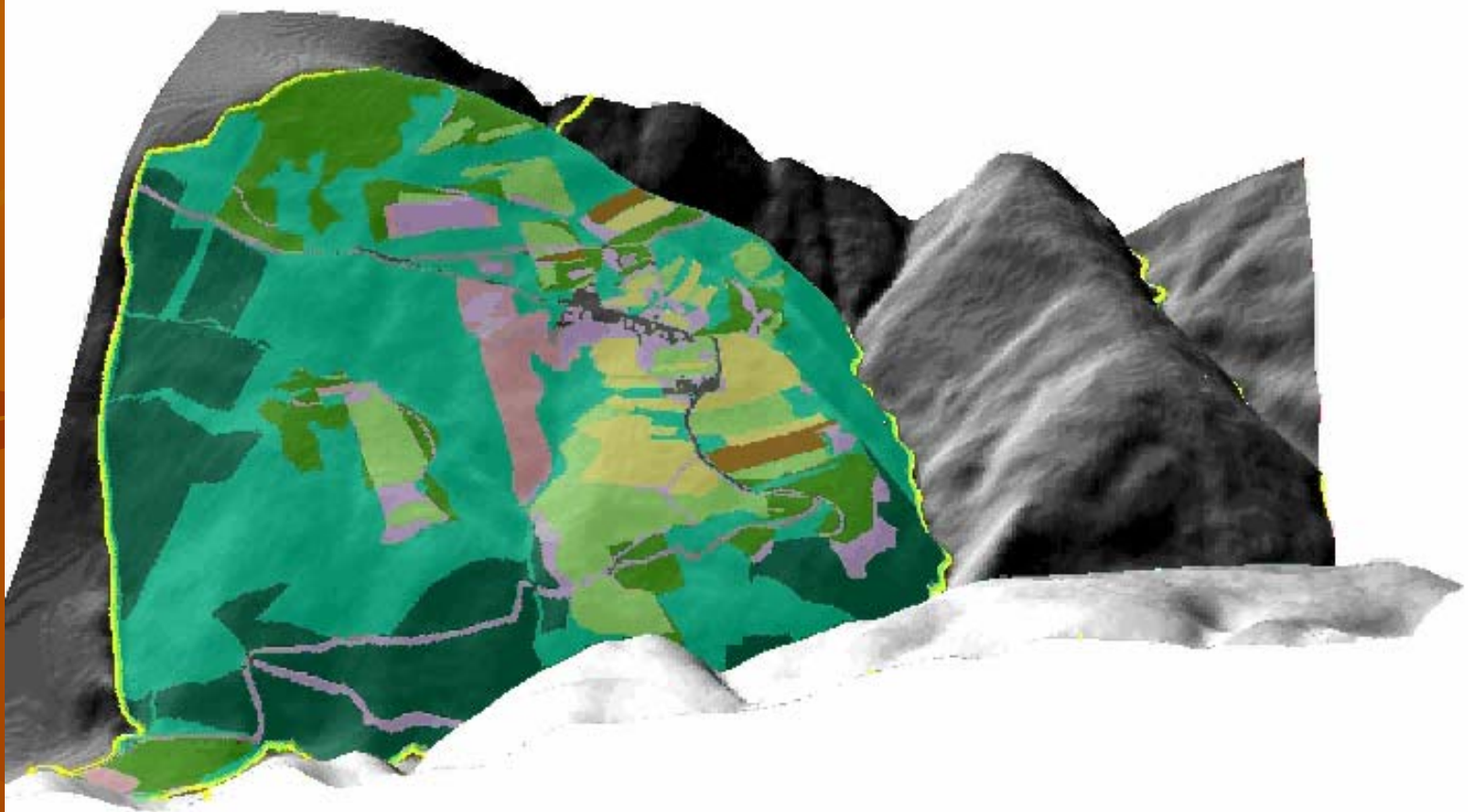
Dobrovo 12. 10. 2006

Franci Petek

ALPTER Slovenia

Land use changes – portion (%) of processes KOŽBANA 1819-2002





Dobrovo 12. 10. 2006

Franci Petek ALPTER Slovenia

Summary table

	Medana			Kožbana		
	1819	2002	1819-2002	1819	2002	1819-2002
Arable land / field	0,6 %	1,4 %	183	2,6 %	1,6 %	61
vineyard	71,2 %	52,8 %	74	18,2 %	5,0 %	27
orchard	2,1 %	5,8 %	276	0,3 %	3,2 %	1066
grass land	13,3 %	9,8 %	73	55,0 %	22,4 %	41
forest	6,6 %	23,6 %	357	17,6 %	63,3 %	360
other	6,2 %	6,6 %	106	6,2 %	4,5 %	72
1. process 1819-2002	Vineyard no changes 45 %			Afforestation from grass land 38 %		
2. process 1819-2002	Afforestation from vineyard 11 %			Forest no changes 16 %		
3. process 1819-2002	Grassing over from vineyard 8 %			Grass land no changes 13 %		
4. process 1819-2002	Afforestation from grass land 7 %			Grassing over from vineyard 6 %		
5. process 1819-2002	Intensification grass land to vineyard 5 %			Vineyard no changes 5 %		