



**University of Natural  
Resources and Applied  
Sciences, Vienna**  
Department of Landscape,  
Spatial and Infrastructure  
Sciences

# ALPTER Austria Report

Arne Arnberger  
Renate Eder  
Christiane Brandenburg  
Uschi Dorau  
Thomas Meitz



Institute of Landscape Development, Recreation and Conservation Planning



# Investigation Area

Ulrichsberg

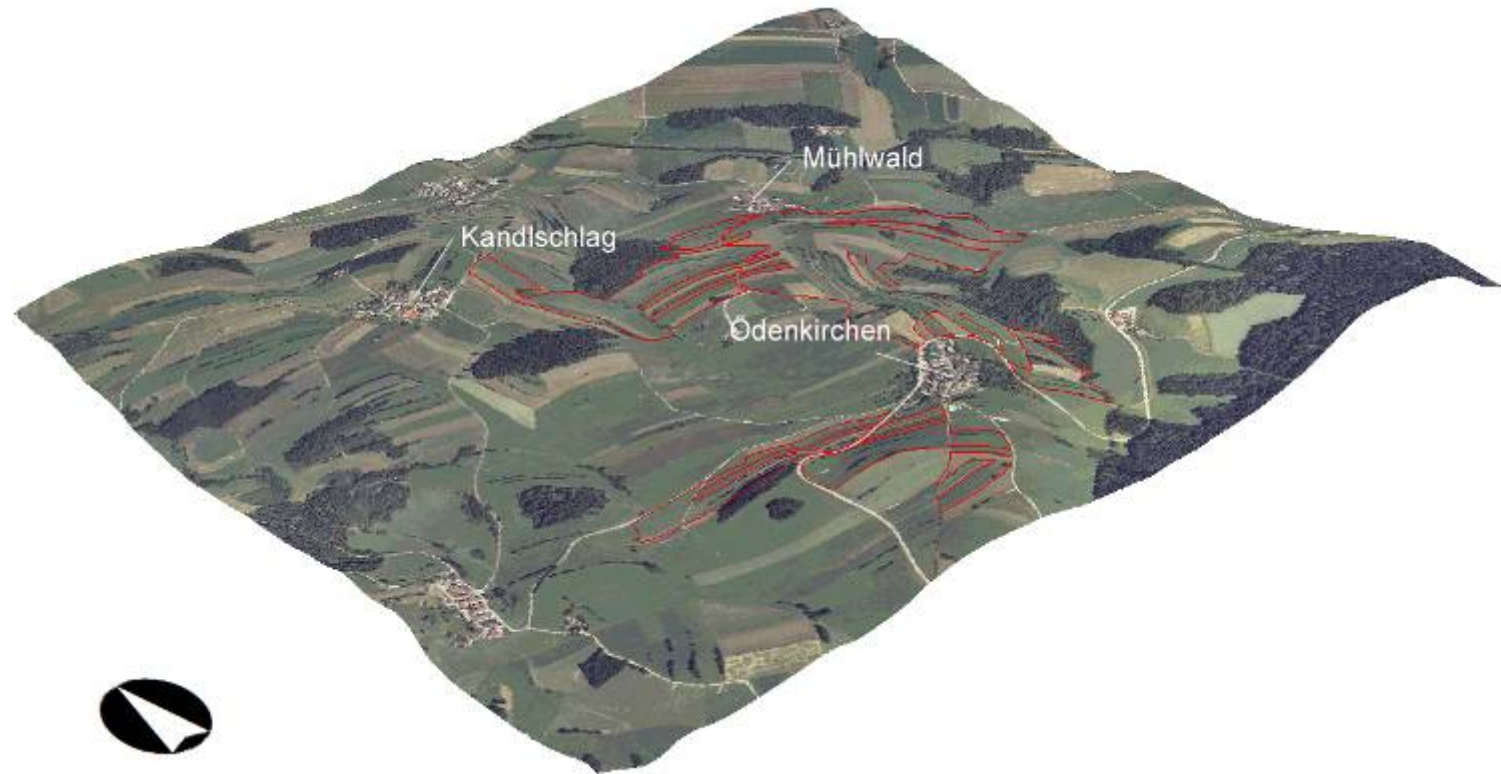
In Upper Austria



— Investigation area -  
= Landscape  
conservation area

(Hergestellt unter Verwendung von Daten des Bundesamtes für Eich- und Vermessungswesen, eigene Kartierungen)

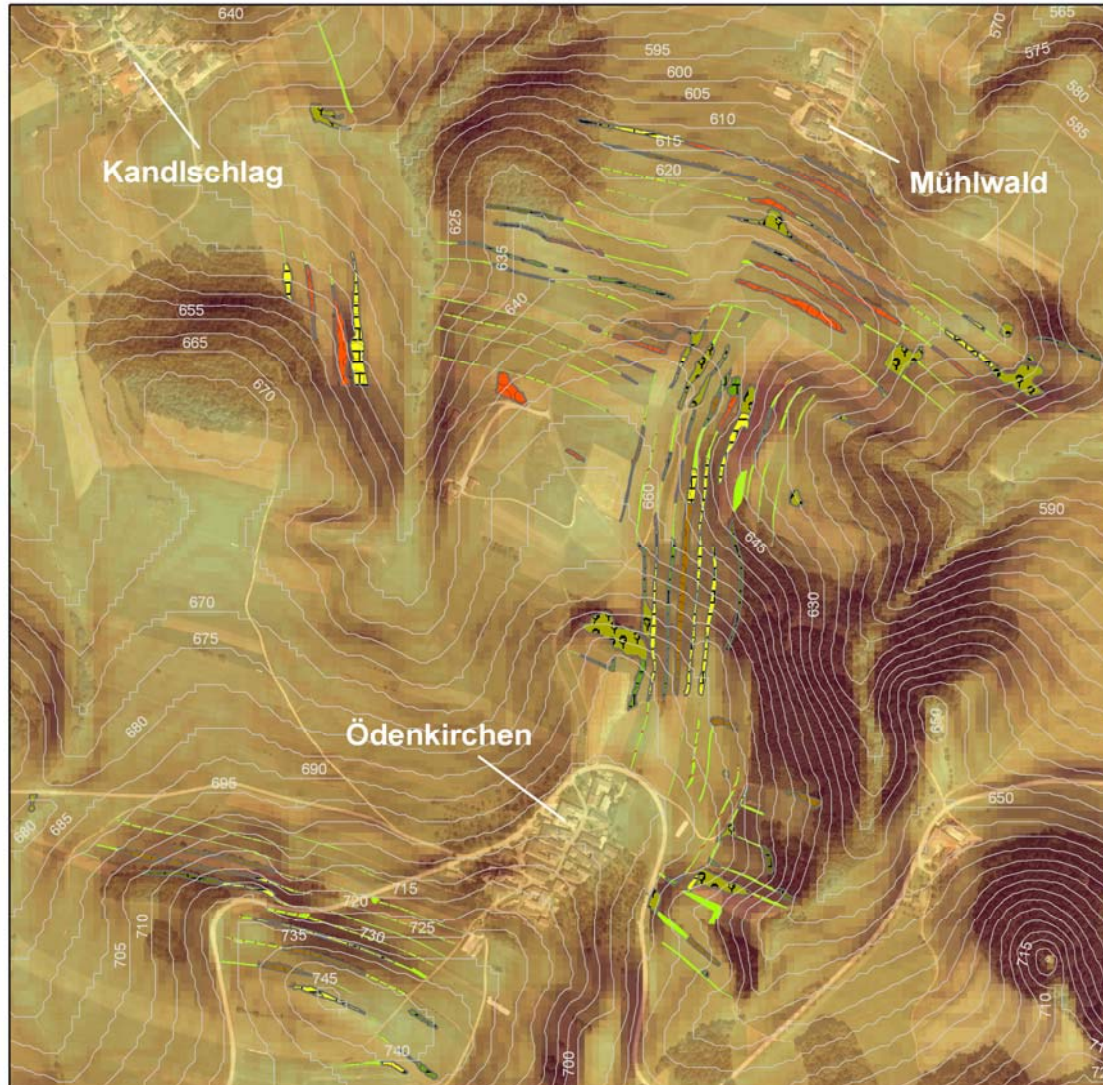
# Influence of morphology depending on biotope



➔ Included in the report

(Hergestellt unter Verwendung von Daten des Bundesamtes für Eich- und Vermessungswesen, eigene Kartierungen)

# Influence of morphology depending on biotope



## Slopes

### Legende

#### Hangneigung

- hoch
- gering
- Höhenschichten 5m

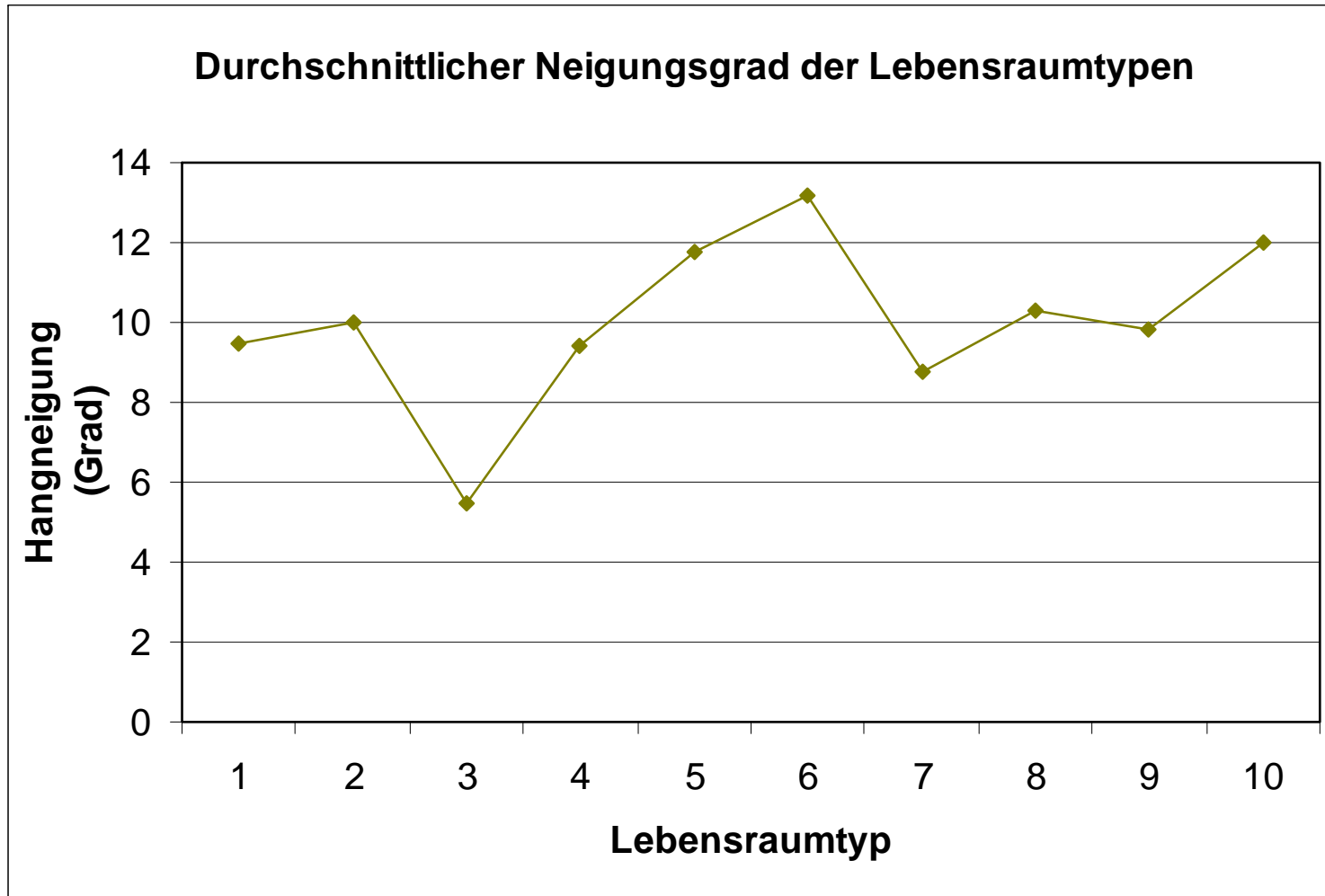
0 62,5 125 250 375 500 Meter



Bearbeiter:  
Universität für Bodenkultur  
Institut für Landschaftsentwicklung,  
Erholungs- und Naturschutzplanung (ILEN)  
Juli 2006

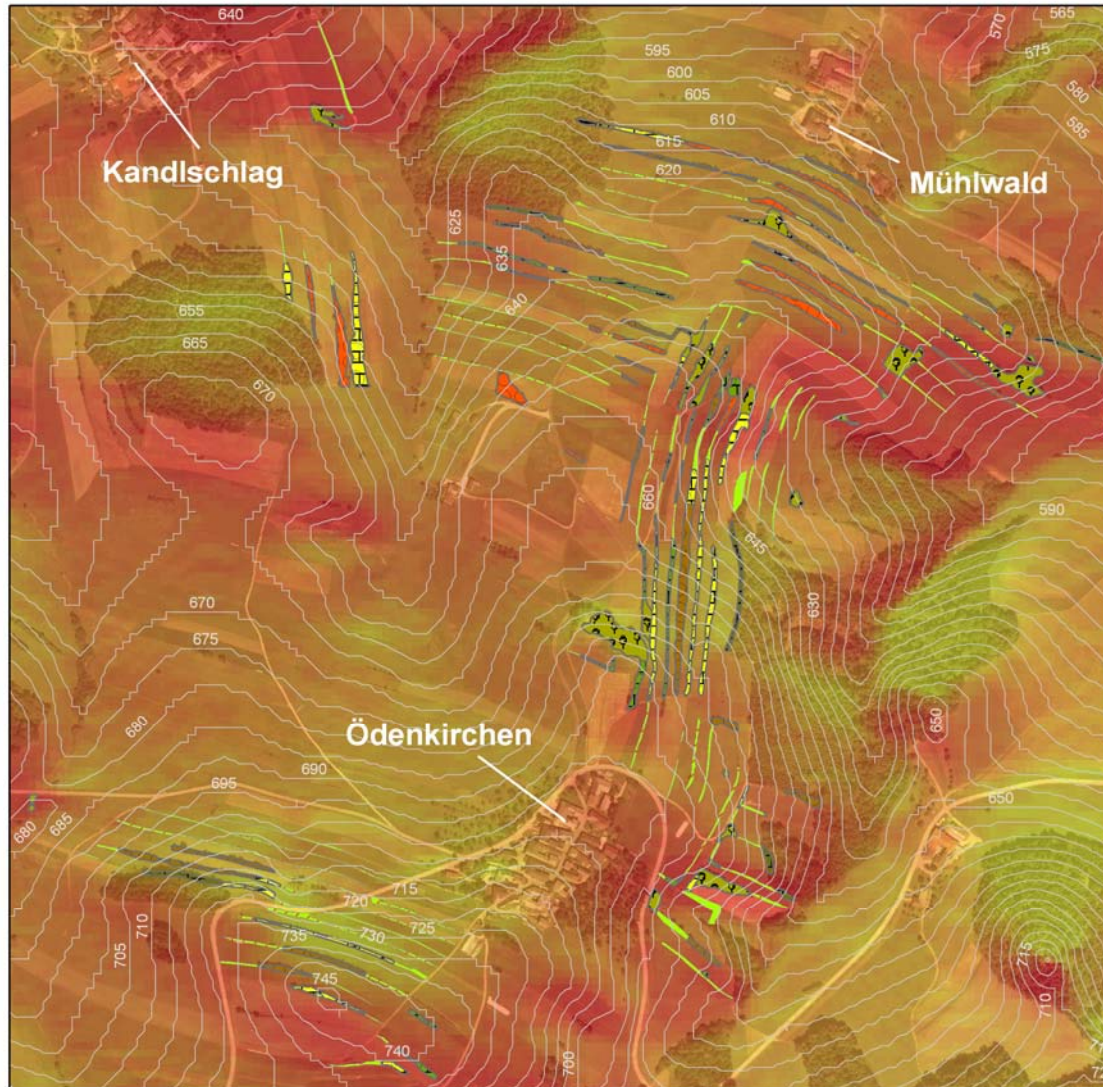
Hergestellt unter Verwendung von Daten  
des Bundesamtes für Eich- und Vermessungswesen

# Influence of morphology depending on biotope



Slopes

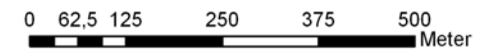
# Influence of morphology depending on biotope



## Solar irradiation

### Legende

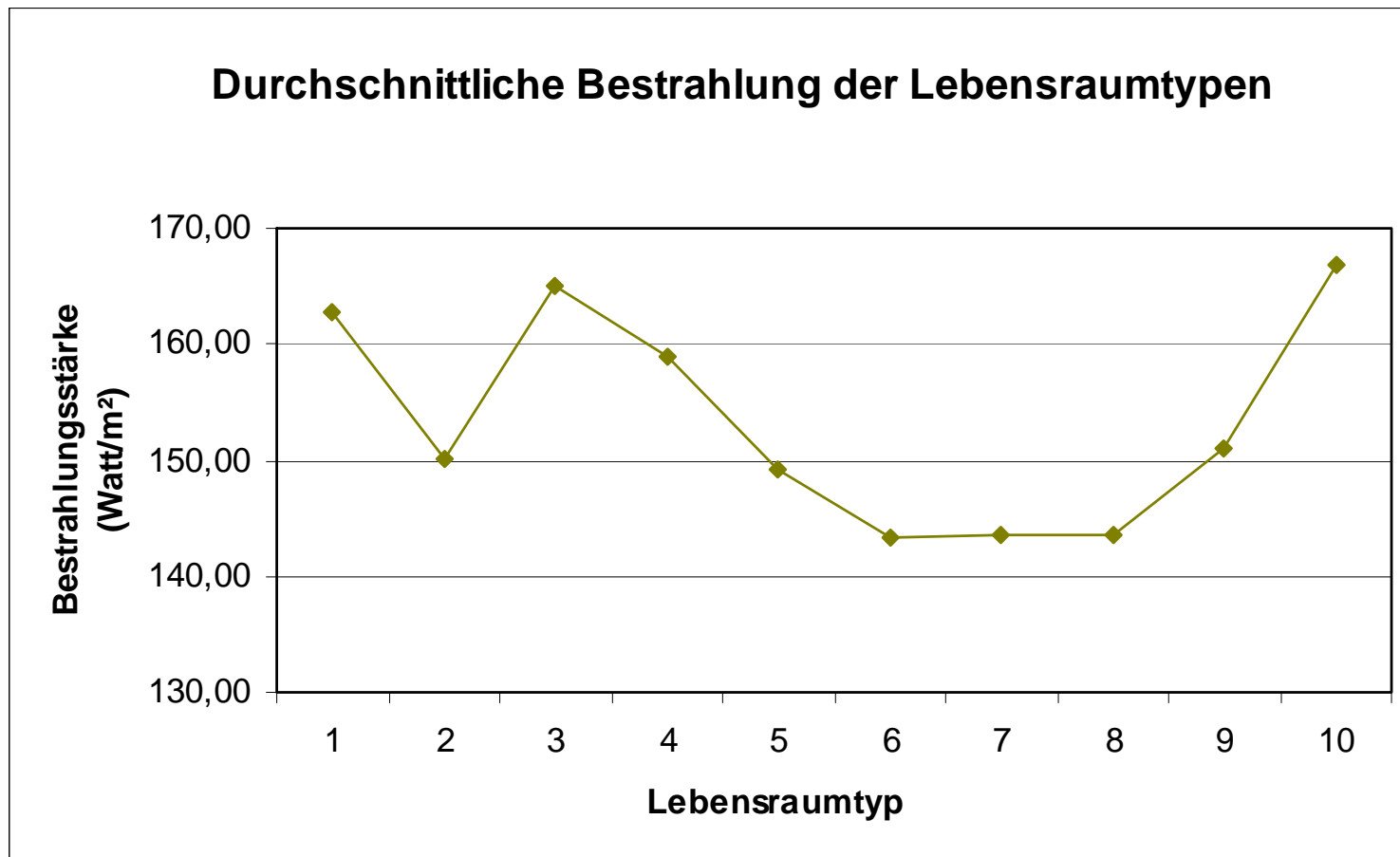
#### Einstrahlungsintensität



Bearbeiter:  
Universität für Bodenkultur  
Institut für Landschaftsentwicklung,  
Erholungs- und Naturschutzplanung (ILEN)  
Juli 2006

Hergestellt unter Verwendung von Daten  
des Bundesamtes für Eich- und Vermessungswesen

# Influence of morphology depending on biotope





## Past activities

Preparation of choice model (questionnaire, images)

Conducting the survey, data entry, first analyses

Some analyses of building development and other historical analyses

Analyses on morphology and terraced area

First analyses on the tourism situation in the region and border regions

Meeting with local stakeholders





## Next steps (till spring meeting)

Finalising of monitoring of buildings and report on historical analyses (settlement development -structure, architecture; land use)

Finalising choice model and report; asking locals?

Report on fauna monitoring (butterflies)

Analysing expert interviews

Poster exhibition on Alpter in the community in winter

Strategies for next steps (tourism concept)

Workshop with local residents → basis for “recovery work”